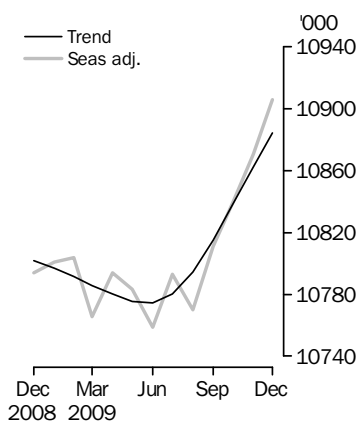


LABOUR FORCE

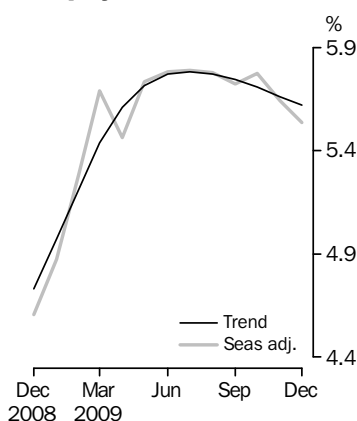
AUSTRALIA

EMBARGO: 11.30AM (CANBERRA TIME) THURS 14 JAN 2010

Employed Persons



Unemployment rate



INQUIRIES

For further information about these and related statistics, contact the National Information and Referral Service on 1300 135 070, email client.services@abs.gov.au or Steve Wood on Canberra (02) 6252 6525, email labourforce@abs.gov.au

KEY FIGURES

	Nov 2009	Dec 2009	Nov 09 to Dec 09	Dec 08 to Dec 09
Trend				
Employed persons ('000)	10 862.0	10 884.3	22.3	0.8 %
Unemployed persons ('000)	652.0	648.2	-3.8	20.9 %
Unemployment rate (%)	5.7	5.6	0.0 pts	0.9 pts
Participation rate (%)	65.2	65.2	0.0 pts	-0.1 pts
Seasonally Adjusted				
Employed persons ('000)	10 870.7	10 905.9	35.2	1.0 %
Unemployed persons ('000)	650.0	639.4	-10.6	22.7 %
Unemployment rate (%)	5.6	5.5	-0.1 pts	0.9 pts
Participation rate (%)	65.2	65.2	0.0 pts	0.0 pts

KEY POINTS

TREND ESTIMATES (MONTHLY CHANGE)

- Employment increased to 10,884,300
- Unemployment decreased to 648,200
- Unemployment rate decreased to 5.6%
- Participation rate remained at 65.2%
- Aggregate monthly hours worked increased to 1,533.9 million hours

SEASONALLY ADJUSTED ESTIMATES (MONTHLY CHANGE)

- Employment increased 35,200 (0.3%) to 10,905,900. Full-time employment increased 7,300 to 7,635,100 and part-time employment increased 27,900 to 3,270,800.
- Unemployment decreased 10,600 (-1.6%) to 639,400. The number of persons looking for full-time work decreased 15,700 to 467,200 and the number of persons looking for part-time work increased 5,100 to 172,100.
- Unemployment rate decreased 0.1 pt to 5.5%. The male unemployment rate decreased 0.2 pts to 5.6% and the female unemployment rate remained at 5.5%.
- Participation rate remained at 65.2%.
- Aggregate monthly hours worked decreased 1.0 million hours (-0.1%) to 1,535.6 million hours.

NOTES

FORTHCOMING ISSUES

<i>ISSUE</i>	<i>RELEASE DATE</i>
January 2010	11 February 2010
February 2010	11 March 2010
March 2010	8 April 2010
April 2010	13 May 2010
May 2010	10 June 2010
June 2010	8 July 2010

CHANGES THIS MONTH

The re-instatement of the Labour Force Survey (LFS) sample is complete. The sample was introduced over a four month period, commencing in September 2009. Detailed information about the sample reinstatement is available in *Information Paper: Labour force Survey Sample Design, Nov 2007 (Third edition)* (cat. no. 6269.0).

SAMPLING ERROR

The estimates in this publication are based on a sample survey. Therefore, published estimates and the movements derived from them are subject to sampling variability. Standard errors give a measure of this variability, see pages 33 and 34. The interval bounded by two standard errors is the 95% confidence interval, which provides a way of looking at the variability inherent in estimates. This represents a 95% chance that the true value of the estimate lies within that interval.

MOVEMENTS IN SEASONALLY ADJUSTED SERIES BETWEEN NOVEMBER 2009 AND DECEMBER 2009

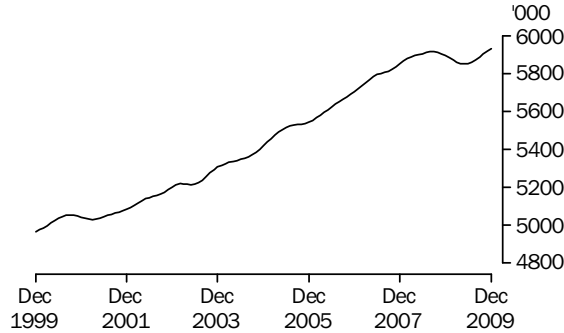
	<i>Monthly change</i>	<i>95% Confidence interval</i>	
Total Employment	35 200	-17 800	to 88 200
Total Unemployment	-10 600	-41 600	to 20 400
Unemployment rate	-0.1 pts	-0.3 pts	to 0.1 pts
Participation rate	0.0 pts	-0.4 pts	to 0.4 pts

Brian Pink
Australian Statistician

EMPLOYED PERSONS TREND ESTIMATES

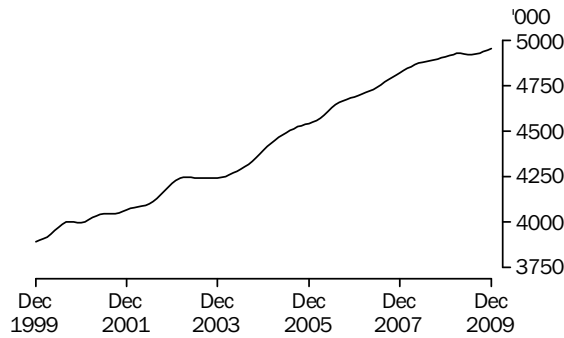
MALES

The trend estimates of employed males generally rose from 4,965,600 in December 1999 to 5,914,700 in September 2008. The trend then fell to 5,850,500 in May 2009 before rising to 5,930,400 in December 2009.



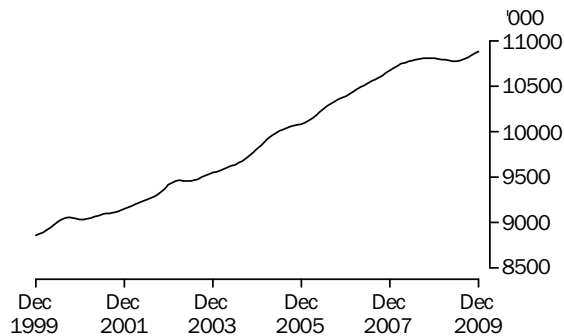
FEMALES

The trend estimates of employed females generally rose from 3,891,500 in December 1999 to 4,927,000 in April 2009 before falling to 4,920,400 in July 2009. The trend has since risen to 4,953,900 in December 2009.



PERSONS

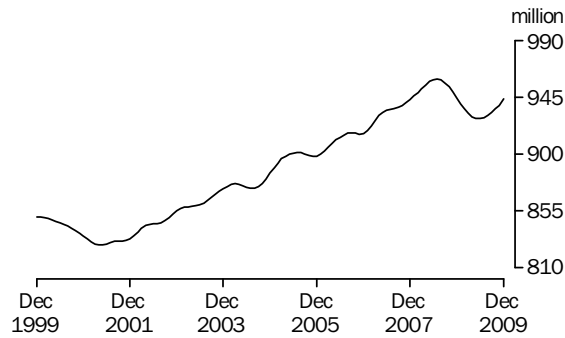
The trend estimates of employed persons generally rose from 8,857,200 in December 1999 to 10,807,000 in October 2008. The trend then fell to 10,774,200 in June 2009 before rising to 10,884,300 in December 2009.



AGGREGATE MONTHLY HOURS WORKED TREND ESTIMATES

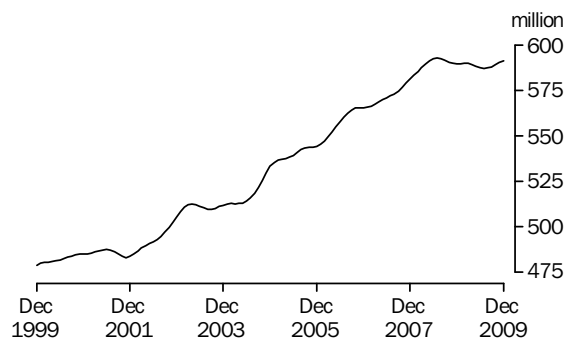
MALES

The trend estimate of aggregate hours worked by males generally fell from 850 million in December 1999 to 828 million in April 2001 before rising to 959 million in July 2008. From its peak in July 2008, the trend then fell to 928 million in June 2009 before increasing to 943 million in December 2009.



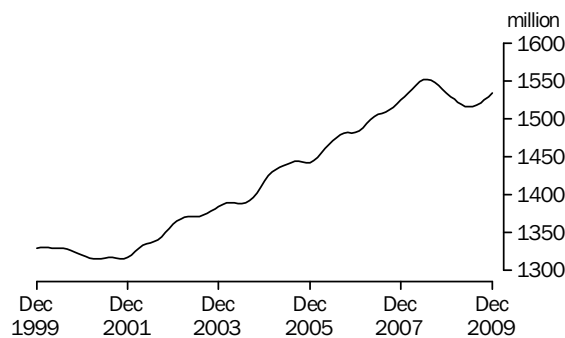
FEMALES

The trend estimate of aggregate hours worked by females generally rose from 479 million in December 1999 to 592 million in July 2008. The trend then fell to 587 million in July 2009 before rising slightly to 591 million in December 2009.



PERSONS

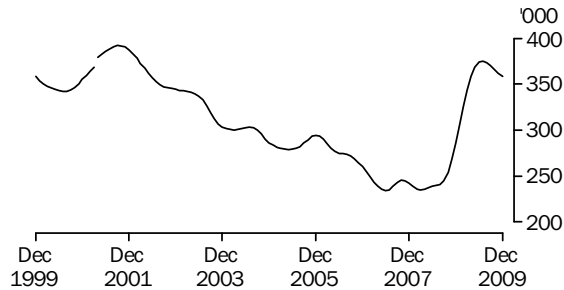
The trend estimate of aggregate hours worked generally fell from 1,329 million in December 1999 to 1,315 million in April 2001. The trend then rose to 1,552 million in July 2008. From its peak in July 2008, the trend then fell to 1,515 million in June 2009 before increasing to 1,534 million in December 2009.



UNEMPLOYED PERSONS TREND ESTIMATES

MALES

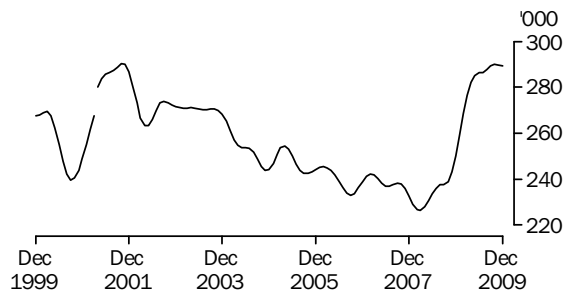
The trend estimates of unemployed males fell from 358,300 in December 1999 to 342,000 in August 2000. The trend then rose sharply to 392,000 in September 2001, before falling to 234,700 in March 2008. The trend then rose to 375,100 in July 2009 before falling to 358,700 in December 2009.



Series break at April 2001; see paragraphs 17 of Explanatory Notes.

FEMALES

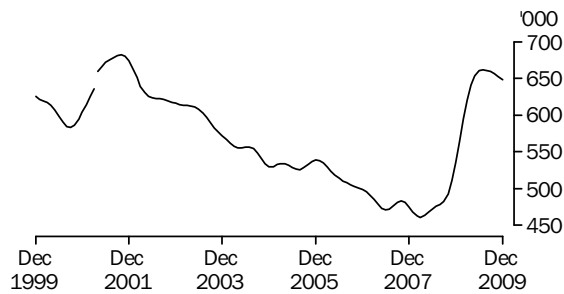
The trend estimates of unemployed females fell from 267,700 in December 1999 to 239,700 in September 2000. The trend then rose sharply to 290,300 in October 2001, before generally falling to 226,400 in March 2008. The trend then rose to 289,900 in October 2009 before falling slightly to 289,400 in December 2009.



Series break at April 2001; see paragraph 17 of Explanatory Notes.

PERSONS

The trend estimates of unemployed persons fell from 625,900 in December 1999 to 582,900 in September 2000. The trend then rose to 682,100 in October 2001, before generally falling to 461,100 in March 2008. The trend then rose sharply to 661,600 in July 2009 before falling to 648,200 in December 2009.



Series break at April 2001; see paragraph 17 of Explanatory Notes.

LABOUR FORCE STATUS (AGED 15 YEARS & OVER): Trend

	EMPLOYED			UNEMPLOYED			UNEMPLOYMENT RATE			Participation rate
	Full time	Part time	Total	Looking for f/t work	Total	Labour force	Looking for f/t work	Total		
	'000	'000	'000	'000	'000	'000	%	%	%	
MALES										
December 2006	4 828.6	873.9	5 702.6	206.7	260.0	5 962.5	4.1	4.4	72.4	
December 2007	4 961.8	889.0	5 850.8	185.2	242.3	6 093.1	3.6	4.0	72.7	
2008										
December	5 002.2	891.7	5 894.0	226.1	286.2	6 180.2	4.3	4.6	72.3	
2009										
January	4 981.4	900.9	5 882.3	243.2	305.9	6 188.1	4.7	4.9	72.3	
February	4 960.3	909.9	5 870.2	260.8	325.5	6 195.8	5.0	5.3	72.2	
March	4 940.7	919.2	5 859.9	277.2	343.7	6 203.5	5.3	5.5	72.2	
April	4 924.4	928.6	5 853.0	290.6	358.4	6 211.3	5.6	5.8	72.2	
May	4 913.1	937.4	5 850.5	300.1	368.3	6 218.8	5.8	5.9	72.2	
June	4 906.6	945.8	5 852.4	305.8	373.8	6 226.3	5.9	6.0	72.2	
July	4 905.7	954.0	5 859.7	307.5	375.1	6 234.8	5.9	6.0	72.1	
August	4 909.2	962.4	5 871.6	306.2	373.3	6 244.9	5.9	6.0	72.1	
September	4 915.6	970.6	5 886.2	303.2	369.9	6 256.1	5.8	5.9	72.1	
October	4 924.0	977.8	5 901.7	299.7	366.1	6 267.8	5.7	5.8	72.1	
November	4 933.0	983.8	5 916.8	296.1	362.1	6 279.0	5.7	5.8	72.1	
December	4 941.1	989.3	5 930.4	292.9	358.7	6 289.1	5.6	5.7	72.2	
FEMALES										
December 2006	2 599.4	2 088.6	4 688.0	149.0	239.0	4 927.1	5.4	4.9	57.9	
December 2007	2 685.7	2 134.5	4 820.2	132.1	232.6	5 052.8	4.7	4.6	58.4	
2008										
December	2 693.6	2 214.3	4 907.9	151.3	250.1	5 158.0	5.3	4.8	58.6	
2009										
January	2 696.9	2 217.8	4 914.7	157.3	259.2	5 173.9	5.5	5.0	58.7	
February	2 703.6	2 217.7	4 921.3	164.5	268.7	5 190.0	5.7	5.2	58.8	
March	2 709.0	2 216.9	4 925.9	171.4	276.6	5 202.5	5.9	5.3	58.8	
April	2 709.6	2 217.4	4 927.0	177.3	282.2	5 209.3	6.1	5.4	58.8	
May	2 704.0	2 221.0	4 925.1	181.7	285.2	5 210.3	6.3	5.5	58.8	
June	2 694.4	2 227.4	4 921.7	184.5	286.2	5 207.9	6.4	5.5	58.7	
July	2 684.4	2 236.1	4 920.4	186.1	286.5	5 207.0	6.5	5.5	58.6	
August	2 677.5	2 245.4	4 923.0	187.5	287.7	5 210.6	6.5	5.5	58.5	
September	2 674.6	2 254.0	4 928.6	188.2	289.2	5 217.8	6.6	5.5	58.5	
October	2 675.3	2 261.2	4 936.5	188.0	289.9	5 226.5	6.6	5.5	58.5	
November	2 677.8	2 267.4	4 945.2	187.1	289.8	5 235.0	6.5	5.5	58.5	
December	2 681.7	2 272.2	4 953.9	185.8	289.4	5 243.3	6.5	5.5	58.5	
PERSONS										
December 2006	7 428.0	2 962.6	10 390.6	355.7	499.0	10 889.6	4.6	4.6	65.0	
December 2007	7 647.5	3 023.5	10 671.0	317.4	474.9	11 146.0	4.0	4.3	65.4	
2008										
December	7 695.8	3 106.1	10 801.9	377.3	536.3	11 338.2	4.7	4.7	65.3	
2009										
January	7 678.2	3 118.7	10 796.9	400.5	565.1	11 362.0	5.0	5.0	65.4	
February	7 663.9	3 127.5	10 791.5	425.3	594.3	11 385.7	5.3	5.2	65.4	
March	7 649.7	3 136.1	10 785.7	448.6	620.3	11 406.0	5.5	5.4	65.4	
April	7 634.0	3 146.0	10 780.0	467.9	640.6	11 420.6	5.8	5.6	65.4	
May	7 617.1	3 158.5	10 775.6	481.8	653.5	11 429.1	5.9	5.7	65.4	
June	7 601.0	3 173.2	10 774.2	490.3	660.0	11 434.2	6.1	5.8	65.3	
July	7 590.1	3 190.1	10 780.2	493.7	661.6	11 441.8	6.1	5.8	65.3	
August	7 586.7	3 207.8	10 794.5	493.7	661.0	11 455.5	6.1	5.8	65.2	
September	7 590.2	3 224.6	10 814.8	491.4	659.2	11 474.0	6.1	5.7	65.2	
October	7 599.3	3 239.0	10 838.3	487.7	656.0	11 494.3	6.0	5.7	65.2	
November	7 610.8	3 251.2	10 862.0	483.2	652.0	11 514.0	6.0	5.7	65.2	
December	7 622.9	3 261.4	10 884.3	478.7	648.2	11 532.5	5.9	5.6	65.2	

LABOUR FORCE STATUS (AGED 15 YEARS & OVER): **Seasonally Adjusted**

	EMPLOYED			UNEMPLOYED			UNEMPLOYMENT RATE			Participation rate
	<i>Full time</i>	<i>Part time</i>	<i>Total</i>	<i>Looking for f/t work</i>	<i>Total</i>	<i>Labour force</i>	<i>Looking for f/t work</i>	<i>Total</i>		
	'000	'000	'000	'000	'000	'000	%	%	%	
MALES										
December 2006	4 830.2	885.7	5 715.9	205.6	255.8	5 971.7	4.1	4.3	72.5	
December 2007	4 952.5	885.9	5 838.4	196.4	256.5	6 094.8	3.8	4.2	72.7	
2008										
December	5 008.5	886.0	5 894.5	227.4	286.1	6 180.7	4.3	4.6	72.3	
2009										
January	4 986.0	895.0	5 881.0	242.5	307.0	6 187.9	4.6	5.0	72.3	
February	4 958.5	909.8	5 868.4	265.1	327.3	6 195.6	5.1	5.3	72.2	
March	4 913.6	937.5	5 851.2	284.2	353.9	6 205.0	5.5	5.7	72.2	
April	4 947.5	918.6	5 866.0	277.1	346.7	6 212.7	5.3	5.6	72.2	
May	4 909.0	940.9	5 849.9	305.7	372.3	6 222.2	5.9	6.0	72.2	
June	4 907.6	931.3	5 839.0	310.7	375.9	6 214.9	6.0	6.0	72.0	
July	4 896.3	964.4	5 860.7	314.5	383.8	6 244.5	6.0	6.1	72.3	
August	4 906.1	965.2	5 871.2	299.9	370.4	6 241.7	5.8	5.9	72.1	
September	4 921.6	969.7	5 891.3	299.5	362.3	6 253.6	5.7	5.8	72.1	
October	4 916.5	977.6	5 894.1	305.2	370.9	6 265.0	5.8	5.9	72.1	
November	4 936.5	979.5	5 916.0	295.7	363.8	6 279.8	5.7	5.8	72.1	
December	4 952.3	994.4	5 946.8	288.3	353.3	6 300.1	5.5	5.6	72.2	
FEMALES										
December 2006	2 607.5	2 083.6	4 691.1	153.2	245.8	4 936.9	5.6	5.0	58.0	
December 2007	2 693.6	2 128.6	4 822.2	134.5	224.4	5 046.6	4.8	4.4	58.4	
2008										
December	2 664.1	2 235.1	4 899.3	140.2	235.0	5 134.2	5.0	4.6	58.3	
2009										
January	2 722.3	2 197.3	4 919.7	147.7	246.5	5 166.2	5.1	4.8	58.6	
February	2 696.3	2 239.2	4 935.5	173.8	276.8	5 212.2	6.1	5.3	59.0	
March	2 703.0	2 211.3	4 914.3	176.8	295.6	5 209.9	6.1	5.7	58.9	
April	2 717.5	2 210.2	4 927.7	175.6	277.4	5 205.1	6.1	5.3	58.8	
May	2 718.2	2 215.0	4 933.1	181.9	283.5	5 216.6	6.3	5.4	58.8	
June	2 694.6	2 225.2	4 919.8	186.6	284.2	5 204.0	6.5	5.5	58.6	
July	2 688.9	2 243.3	4 932.2	180.1	279.6	5 211.8	6.3	5.4	58.6	
August	2 650.7	2 248.3	4 899.0	185.8	290.1	5 189.1	6.6	5.6	58.3	
September	2 669.4	2 250.4	4 919.8	195.2	293.9	5 213.7	6.8	5.6	58.4	
October	2 680.2	2 265.0	4 945.2	189.9	293.4	5 238.6	6.6	5.6	58.6	
November	2 691.4	2 263.4	4 954.7	187.3	286.1	5 240.9	6.5	5.5	58.5	
December	2 682.8	2 276.3	4 959.1	178.9	286.1	5 245.2	6.3	5.5	58.5	
PERSONS										
December 2006	7 437.7	2 969.3	10 407.0	358.8	501.6	10 908.6	4.6	4.6	65.1	
December 2007	7 646.1	3 014.5	10 660.6	330.9	480.9	11 141.5	4.1	4.3	65.4	
2008										
December	7 672.6	3 121.2	10 793.8	367.6	521.1	11 314.9	4.6	4.6	65.2	
2009										
January	7 708.3	3 092.3	10 800.6	390.2	553.5	11 354.1	4.8	4.9	65.3	
February	7 654.9	3 149.0	10 803.8	438.9	604.1	11 407.9	5.4	5.3	65.5	
March	7 616.6	3 148.8	10 765.4	461.0	649.5	11 414.9	5.7	5.7	65.5	
April	7 665.0	3 128.8	10 793.8	452.7	624.0	11 417.8	5.6	5.5	65.4	
May	7 627.2	3 155.9	10 783.0	487.6	655.8	11 438.8	6.0	5.7	65.4	
June	7 602.2	3 156.5	10 758.7	497.4	660.2	11 418.9	6.1	5.8	65.2	
July	7 585.2	3 207.7	10 792.9	494.7	663.4	11 456.3	6.1	5.8	65.3	
August	7 556.8	3 213.4	10 770.2	485.8	660.5	11 430.7	6.0	5.8	65.1	
September	7 591.0	3 220.1	10 811.1	494.7	656.3	11 467.3	6.1	5.7	65.2	
October	7 596.7	3 242.6	10 839.3	495.1	664.3	11 503.6	6.1	5.8	65.3	
November	7 627.8	3 242.9	10 870.7	483.0	650.0	11 520.7	6.0	5.6	65.2	
December	7 635.1	3 270.8	10 905.9	467.2	639.4	11 545.3	5.8	5.5	65.2	

LABOUR FORCE STATUS (AGED 15 YEARS & OVER): Original

	EMPLOYED			UNEMPLOYED		Labour force	Not in labour force	Civilian population aged 15 years and over	UNEMPLOYMENT RATE		Participation rate
	Full time	Part time	Total	Looking for f/t work	Total				Looking for f/t work	Total	
	'000	'000	'000	'000	'000				'000	'000	
MALES											
December 2006	4 891.7	888.7	5 780.4	198.6	250.4	6 030.8	2 203.8	8 234.7	3.9	4.2	73.2
December 2007	5 017.6	890.2	5 907.8	189.5	251.4	6 159.1	2 222.1	8 381.2	3.6	4.1	73.5
2008											
December	5 076.0	891.0	5 967.0	217.1	277.5	6 244.5	2 303.2	8 547.7	4.1	4.4	73.1
2009											
January	4 983.9	853.9	5 837.9	272.0	340.5	6 178.4	2 383.6	8 562.0	5.2	5.5	72.2
February	4 978.3	881.8	5 860.1	292.4	362.3	6 222.3	2 353.9	8 576.2	5.5	5.8	72.6
March	4 891.3	960.8	5 852.1	295.0	375.4	6 227.6	2 363.0	8 590.5	5.7	6.0	72.5
April	4 925.6	938.6	5 864.2	283.2	356.0	6 220.2	2 382.5	8 602.7	5.4	5.7	72.3
May	4 885.8	955.3	5 841.1	318.7	387.1	6 228.2	2 386.3	8 614.6	6.1	6.2	72.3
June	4 879.1	957.5	5 836.6	317.9	375.1	6 211.7	2 414.8	8 626.5	6.1	6.0	72.0
July	4 911.8	965.2	5 877.0	290.2	349.1	6 226.1	2 415.3	8 641.5	5.6	5.6	72.0
August	4 874.7	958.8	5 833.5	281.3	347.6	6 181.1	2 475.3	8 656.4	5.5	5.6	71.4
September	4 964.0	957.5	5 921.6	292.4	359.9	6 281.5	2 390.0	8 671.4	5.6	5.7	72.4
October	4 908.9	998.9	5 907.8	283.5	346.0	6 253.8	2 435.6	8 689.3	5.5	5.5	72.0
November	4 938.3	956.8	5 895.2	273.5	332.6	6 227.8	2 479.4	8 707.2	5.2	5.3	71.5
December	5 019.4	1 000.0	6 019.3	274.3	341.2	6 360.5	2 364.6	8 725.1	5.2	5.4	72.9
FEMALES											
December 2006	2 664.3	2 088.1	4 752.4	153.0	244.7	4 997.1	3 512.2	8 509.3	5.4	4.9	58.7
December 2007	2 752.2	2 136.8	4 889.0	133.3	222.4	5 111.4	3 537.2	8 648.6	4.6	4.4	59.1
2008											
December	2 719.3	2 246.5	4 965.8	137.2	231.0	5 196.7	3 608.1	8 804.8	4.8	4.4	59.0
2009											
January	2 737.7	2 109.9	4 847.6	168.7	263.1	5 110.7	3 707.5	8 818.1	5.8	5.1	58.0
February	2 718.9	2 191.9	4 910.9	202.8	324.3	5 235.2	3 596.3	8 831.5	6.9	6.2	59.3
March	2 684.1	2 234.1	4 918.2	187.1	321.3	5 239.5	3 605.3	8 844.8	6.5	6.1	59.2
April	2 687.1	2 233.5	4 920.6	177.7	284.3	5 204.9	3 650.8	8 855.7	6.2	5.5	58.8
May	2 704.3	2 236.3	4 940.5	180.8	280.6	5 221.1	3 645.7	8 866.8	6.3	5.4	58.9
June	2 666.7	2 265.7	4 932.4	184.7	278.7	5 211.0	3 666.9	8 878.0	6.5	5.3	58.7
July	2 694.0	2 236.0	4 930.1	167.1	256.6	5 186.7	3 705.5	8 892.2	5.8	4.9	58.3
August	2 612.7	2 260.4	4 873.0	172.1	276.2	5 149.2	3 757.2	8 906.5	6.2	5.4	57.8
September	2 723.1	2 240.6	4 963.7	189.3	290.7	5 254.4	3 666.3	8 920.7	6.5	5.5	58.9
October	2 652.3	2 293.1	4 945.4	174.2	270.9	5 216.3	3 721.6	8 937.9	6.2	5.2	58.4
November	2 698.7	2 254.9	4 953.6	173.2	261.9	5 215.4	3 739.6	8 955.0	6.0	5.0	58.2
December	2 737.6	2 290.1	5 027.7	174.4	280.0	5 307.7	3 664.5	8 972.1	6.0	5.3	59.2
PERSONS											
December 2006	7 556.0	2 976.9	10 532.8	351.6	495.1	11 027.9	5 716.1	16 744.0	4.4	4.5	65.9
December 2007	7 769.8	3 026.9	10 796.8	322.8	473.8	11 270.5	5 759.3	17 029.8	4.0	4.2	66.2
2008											
December	7 795.3	3 137.5	10 932.8	354.2	508.5	11 441.3	5 911.3	17 352.5	4.3	4.4	65.9
2009											
January	7 721.7	2 963.8	10 685.5	440.7	603.6	11 289.1	6 091.1	17 380.2	5.4	5.3	65.0
February	7 697.2	3 073.7	10 770.9	495.3	686.6	11 457.5	5 950.2	17 407.7	6.0	6.0	65.8
March	7 575.5	3 194.9	10 770.4	482.1	696.7	11 467.1	5 968.3	17 435.4	6.0	6.1	65.8
April	7 612.7	3 172.1	10 784.8	460.9	640.2	11 425.1	6 033.3	17 458.4	5.7	5.6	65.4
May	7 590.1	3 191.6	10 781.6	499.6	667.8	11 449.4	6 032.0	17 481.4	6.2	5.8	65.5
June	7 545.8	3 223.1	10 768.9	502.6	653.8	11 422.7	6 081.7	17 504.4	6.2	5.7	65.3
July	7 605.8	3 201.2	10 807.0	457.3	605.8	11 412.8	6 120.9	17 533.7	5.7	5.3	65.1
August	7 487.4	3 219.1	10 706.5	453.4	623.9	11 330.4	6 232.6	17 562.9	5.7	5.5	64.5
September	7 687.1	3 198.1	10 885.2	481.7	650.6	11 535.9	6 056.3	17 592.2	5.9	5.6	65.6
October	7 561.2	3 292.0	10 853.2	457.7	616.9	11 470.1	6 157.1	17 627.2	5.7	5.4	65.1
November	7 637.0	3 211.7	10 848.8	446.7	594.5	11 443.2	6 219.0	17 662.2	5.5	5.2	64.8
December	7 757.0	3 290.1	11 047.1	448.8	621.1	11 668.2	6 029.1	17 697.2	5.5	5.3	65.9

LABOUR FORCE STATUS (AGED 15 YEARS & OVER)—New South Wales

	TREND					SEASONALLY ADJUSTED					Civilian population aged 15 years and over
	Employed full time	Total employed	Total unemp-loyed	Unemp-loyment rate	Partici-pation rate	Employed full time	Total employed	Total unemp-loyed	Unemp-loyment rate	Partici-pation rate	
	'000	'000	'000	%	%	'000	'000	'000	%	%	
MALES											
December 2006	1 533.8	1 824.4	90.1	4.7	71.0	1 533.8	1 831.3	82.4	4.3	71.0	2 696.4
December 2007	1 578.2	1 858.0	84.4	4.3	71.1	1 571.3	1 849.4	87.4	4.5	70.9	2 733.3
2008											
December	1 563.1	1 853.3	103.4	5.3	70.6	1 562.9	1 856.1	104.4	5.3	70.7	2 773.5
2009											
January	1 554.9	1 848.6	110.0	5.6	70.5	1 554.8	1 849.4	110.6	5.6	70.6	2 776.9
February	1 547.4	1 843.7	116.6	5.9	70.5	1 552.9	1 843.0	114.6	5.9	70.4	2 780.4
March	1 541.9	1 840.7	122.3	6.2	70.5	1 535.6	1 836.0	129.8	6.6	70.6	2 783.8
April	1 539.4	1 840.6	125.7	6.4	70.6	1 535.3	1 841.4	121.0	6.2	70.4	2 786.9
May	1 539.8	1 843.1	126.4	6.4	70.6	1 539.9	1 839.9	129.8	6.6	70.6	2 789.8
June	1 542.2	1 847.1	124.8	6.3	70.6	1 542.2	1 841.9	126.7	6.4	70.5	2 792.7
July	1 545.8	1 851.4	122.4	6.2	70.6	1 548.5	1 864.2	122.6	6.2	71.0	2 796.5
August	1 549.5	1 854.7	120.4	6.1	70.5	1 551.6	1 853.2	120.1	6.1	70.5	2 800.3
September	1 552.6	1 856.9	119.6	6.0	70.5	1 553.5	1 856.9	108.6	5.5	70.1	2 804.1
October	1 555.4	1 858.6	119.7	6.1	70.4	1 552.6	1 857.1	124.5	6.3	70.5	2 808.9
November	1 558.0	1 860.1	120.3	6.1	70.4	1 554.8	1 856.3	122.8	6.2	70.3	2 813.6
December	1 560.3	1 861.0	121.5	6.1	70.4	1 565.9	1 865.0	123.7	6.2	70.6	2 818.4
FEMALES											
December 2006	848.2	1 491.7	83.3	5.3	56.1	850.4	1 504.7	88.1	5.5	56.7	2 807.2
December 2007	872.6	1 534.1	78.1	4.8	56.7	876.6	1 531.7	78.1	4.9	56.6	2 843.4
2008											
December	880.2	1 543.3	93.4	5.7	56.8	875.2	1 543.5	85.2	5.2	56.5	2 883.3
2009											
January	882.0	1 545.9	96.6	5.9	56.9	898.8	1 549.7	91.0	5.5	56.8	2 886.8
February	883.0	1 548.2	99.9	6.1	57.0	879.4	1 550.3	101.1	6.1	57.1	2 890.2
March	882.4	1 550.2	102.7	6.2	57.1	880.7	1 543.5	115.9	7.0	57.3	2 893.7
April	879.6	1 551.7	104.2	6.3	57.2	876.3	1 552.7	99.4	6.0	57.0	2 897.0
May	875.0	1 552.6	104.0	6.3	57.1	880.1	1 554.4	100.2	6.1	57.1	2 899.9
June	869.8	1 553.0	102.3	6.2	57.0	865.3	1 553.0	106.1	6.4	57.2	2 902.9
July	864.6	1 553.0	99.9	6.0	56.9	873.1	1 558.4	97.6	5.9	57.0	2 906.6
August	859.6	1 552.9	97.9	5.9	56.7	854.3	1 547.9	100.6	6.1	56.6	2 910.3
September	855.0	1 552.9	96.4	5.8	56.6	850.0	1 550.4	90.8	5.5	56.3	2 914.1
October	851.2	1 553.4	94.9	5.8	56.5	851.6	1 553.4	98.5	6.0	56.6	2 919.0
November	848.1	1 554.1	93.5	5.7	56.4	853.1	1 556.7	93.8	5.7	56.4	2 924.0
December	846.2	1 555.0	92.1	5.6	56.3	844.0	1 556.1	91.0	5.5	56.2	2 928.9
PERSONS											
December 2006	2 382.0	3 316.0	173.4	5.0	63.4	2 384.2	3 336.0	170.5	4.9	63.7	5 503.5
December 2007	2 450.8	3 392.1	162.4	4.6	63.7	2 447.9	3 381.1	165.5	4.7	63.6	5 576.7
2008											
December	2 443.3	3 396.6	196.8	5.5	63.5	2 438.1	3 399.6	189.6	5.3	63.4	5 656.7
2009											
January	2 436.9	3 394.5	206.6	5.7	63.6	2 453.6	3 399.1	201.6	5.6	63.6	5 663.7
February	2 430.4	3 391.9	216.6	6.0	63.6	2 432.3	3 393.3	215.7	6.0	63.6	5 670.6
March	2 424.3	3 390.9	225.1	6.2	63.7	2 416.3	3 379.5	245.7	6.8	63.9	5 677.5
April	2 419.0	3 392.3	229.9	6.3	63.7	2 411.6	3 394.2	220.4	6.1	63.6	5 683.9
May	2 414.8	3 395.7	230.3	6.4	63.7	2 420.0	3 394.3	230.0	6.3	63.7	5 689.7
June	2 411.9	3 400.1	227.1	6.3	63.7	2 407.6	3 394.8	232.8	6.4	63.7	5 695.5
July	2 410.4	3 404.4	222.3	6.1	63.6	2 421.5	3 422.7	220.2	6.0	63.9	5 703.1
August	2 409.2	3 407.6	218.3	6.0	63.5	2 405.9	3 401.1	220.7	6.1	63.4	5 710.6
September	2 407.7	3 409.9	216.0	6.0	63.4	2 403.4	3 407.3	199.4	5.5	63.1	5 718.1
October	2 406.6	3 412.0	214.6	5.9	63.3	2 404.2	3 410.5	223.0	6.1	63.4	5 727.9
November	2 406.1	3 414.2	213.8	5.9	63.2	2 408.0	3 413.0	216.6	6.0	63.3	5 737.6
December	2 406.5	3 416.0	213.6	5.9	63.2	2 409.9	3 421.0	214.6	5.9	63.3	5 747.3

LABOUR FORCE STATUS (AGED 15 YEARS & OVER)—Victoria

	TREND					SEASONALLY ADJUSTED					Civilian population aged 15 years and over '000
	Employed full time	Total employed	Total unemployed	Unemployment rate	Participation rate	Employed full time	Total employed	Total unemployed	Unemployment rate	Participation rate	
	'000	'000	'000	%	%	'000	'000	'000	%	%	
MALES											
December 2006	1 189.6	1 415.6	68.8	4.6	72.5	1 190.1	1 420.0	71.3	4.8	72.9	2 046.8
December 2007	1 224.7	1 458.2	64.5	4.2	73.0	1 220.0	1 454.4	71.9	4.7	73.3	2 083.5
2008											
December	1 211.7	1 448.0	70.1	4.6	71.4	1 217.4	1 446.8	71.5	4.7	71.4	2 125.3
2009											
January	1 207.4	1 445.6	75.6	5.0	71.5	1 209.6	1 446.2	77.6	5.1	71.6	2 128.9
February	1 202.6	1 443.6	81.2	5.3	71.5	1 199.2	1 441.6	83.0	5.4	71.5	2 132.5
March	1 197.9	1 442.3	86.7	5.7	71.6	1 191.4	1 441.8	85.6	5.6	71.5	2 136.0
April	1 194.2	1 441.7	91.9	6.0	71.7	1 208.1	1 446.7	88.0	5.7	71.7	2 139.3
May	1 191.8	1 441.7	96.0	6.2	71.8	1 180.2	1 441.2	96.9	6.3	71.8	2 142.2
June	1 191.6	1 443.0	98.7	6.4	71.9	1 192.0	1 440.5	101.0	6.6	71.9	2 145.2
July	1 193.7	1 446.5	99.2	6.4	71.9	1 196.7	1 444.0	100.8	6.5	71.9	2 149.1
August	1 197.5	1 452.4	97.4	6.3	72.0	1 195.6	1 455.3	102.0	6.6	72.3	2 153.0
September	1 202.3	1 459.8	93.9	6.0	72.0	1 200.0	1 451.5	90.4	5.9	71.5	2 156.9
October	1 207.3	1 467.8	89.8	5.8	72.0	1 203.0	1 470.4	90.0	5.8	72.2	2 161.9
November	1 212.2	1 475.4	85.7	5.5	72.1	1 224.6	1 481.4	86.0	5.5	72.3	2 166.9
December	1 215.5	1 482.1	81.9	5.2	72.1	1 212.4	1 484.5	77.5	5.0	71.9	2 171.9
FEMALES											
December 2006	628.0	1 155.5	63.8	5.2	57.2	627.2	1 153.5	64.3	5.3	57.1	2 132.3
December 2007	650.3	1 196.2	63.8	5.1	58.1	655.6	1 204.7	62.3	4.9	58.4	2 168.2
2008											
December	637.6	1 209.3	64.6	5.1	57.7	630.6	1 207.9	60.5	4.8	57.4	2 208.7
2009											
January	636.3	1 208.6	66.9	5.2	57.7	638.6	1 214.8	59.8	4.7	57.6	2 212.2
February	637.2	1 207.6	69.0	5.4	57.6	635.5	1 210.5	75.1	5.8	58.0	2 215.6
March	639.7	1 207.0	70.5	5.5	57.6	638.1	1 207.5	74.3	5.8	57.8	2 219.1
April	643.2	1 207.4	71.0	5.6	57.5	641.7	1 195.1	70.8	5.6	57.0	2 221.7
May	646.7	1 209.2	70.7	5.5	57.5	651.9	1 212.2	70.9	5.5	57.7	2 224.6
June	649.4	1 212.6	69.9	5.4	57.6	649.8	1 214.1	68.9	5.4	57.6	2 227.4
July	651.3	1 217.9	69.2	5.4	57.7	651.8	1 223.8	63.5	4.9	57.7	2 231.1
August	653.1	1 224.0	69.4	5.4	57.9	651.8	1 219.1	73.6	5.7	57.8	2 234.9
September	655.1	1 230.1	70.2	5.4	58.1	657.6	1 227.2	69.5	5.4	57.9	2 238.6
October	657.6	1 235.8	71.0	5.4	58.2	647.9	1 234.6	73.3	5.6	58.3	2 243.4
November	660.4	1 241.1	71.6	5.5	58.4	666.1	1 249.2	68.6	5.2	58.6	2 248.2
December	663.3	1 245.7	72.3	5.5	58.6	667.4	1 245.4	73.6	5.6	58.5	2 253.1
PERSONS											
December 2006	1 817.5	2 571.1	132.6	4.9	64.7	1 817.3	2 573.5	135.7	5.0	64.8	4 179.1
December 2007	1 875.1	2 654.4	128.3	4.6	65.4	1 875.6	2 659.0	134.2	4.8	65.7	4 251.6
2008											
December	1 849.3	2 657.4	134.6	4.8	64.4	1 848.0	2 654.7	132.0	4.7	64.3	4 334.0
2009											
January	1 843.7	2 654.1	142.4	5.1	64.4	1 848.2	2 661.0	137.4	4.9	64.5	4 341.1
February	1 839.8	2 651.1	150.2	5.4	64.4	1 834.7	2 652.1	158.2	5.6	64.6	4 348.1
March	1 837.6	2 649.3	157.2	5.6	64.5	1 829.5	2 649.3	159.8	5.7	64.5	4 355.1
April	1 837.4	2 649.1	162.9	5.8	64.5	1 849.8	2 641.8	158.8	5.7	64.2	4 360.9
May	1 838.6	2 650.9	166.6	5.9	64.5	1 832.1	2 653.4	167.7	5.9	64.6	4 366.8
June	1 841.0	2 655.7	168.6	6.0	64.6	1 841.8	2 654.5	169.9	6.0	64.6	4 372.7
July	1 845.0	2 664.4	168.4	5.9	64.7	1 848.4	2 667.8	164.3	5.8	64.7	4 380.3
August	1 850.6	2 676.4	166.8	5.9	64.8	1 847.4	2 674.4	175.6	6.2	65.0	4 387.9
September	1 857.4	2 689.9	164.1	5.8	64.9	1 857.6	2 678.7	160.0	5.6	64.6	4 395.5
October	1 865.0	2 703.6	160.8	5.6	65.0	1 850.9	2 705.0	163.3	5.7	65.1	4 405.3
November	1 872.6	2 716.5	157.3	5.5	65.1	1 890.7	2 730.6	154.6	5.4	65.3	4 415.2
December	1 878.9	2 727.8	154.1	5.3	65.2	1 879.8	2 729.9	151.1	5.2	65.1	4 425.0

	TREND					SEASONALLY ADJUSTED					Civilian population aged 15 years and over '000
	Employed full time	Total employed	Total unemployed	Unemployment rate	Participation rate	Employed full time	Total employed	Total unemployed	Unemployment rate	Participation rate	
	'000	'000	'000	%	%	'000	'000	'000	%	%	
MALES											
December 2006	995.9	1 159.6	43.8	3.6	74.0	998.8	1 161.7	43.2	3.6	74.1	1 625.7
December 2007	1 019.6	1 188.1	38.5	3.1	73.8	1 021.9	1 188.8	38.4	3.1	73.9	1 661.8
2008											
December	1 041.2	1 205.9	54.7	4.3	74.0	1 037.2	1 199.0	53.5	4.3	73.5	1 704.2
2009											
January	1 039.5	1 205.8	58.9	4.7	74.0	1 036.1	1 199.9	60.5	4.8	73.8	1 708.0
February	1 037.6	1 205.3	63.1	5.0	74.1	1 039.1	1 209.1	64.2	5.0	74.4	1 711.7
March	1 035.3	1 204.4	67.0	5.3	74.1	1 032.8	1 208.2	65.8	5.2	74.3	1 715.4
April	1 033.1	1 203.4	70.4	5.5	74.1	1 038.0	1 205.7	68.3	5.4	74.2	1 718.0
May	1 031.4	1 202.6	73.2	5.7	74.1	1 030.8	1 203.0	75.3	5.9	74.3	1 721.1
June	1 029.8	1 202.0	75.2	5.9	74.1	1 026.8	1 191.0	76.2	6.0	73.5	1 724.3
July	1 028.0	1 201.8	76.5	6.0	74.0	1 026.3	1 204.9	79.5	6.2	74.3	1 727.9
August	1 026.0	1 202.4	77.2	6.0	73.9	1 028.0	1 205.5	71.9	5.6	73.8	1 731.5
September	1 023.9	1 203.2	77.6	6.1	73.8	1 027.2	1 205.9	78.9	6.1	74.1	1 735.1
October	1 021.6	1 203.6	77.9	6.1	73.7	1 021.3	1 202.0	79.9	6.2	73.7	1 738.9
November	1 019.4	1 203.7	78.2	6.1	73.6	1 016.7	1 201.4	76.9	6.0	73.3	1 742.8
December	1 017.3	1 203.9	78.5	6.1	73.5	1 015.7	1 203.7	78.8	6.1	73.4	1 746.7
FEMALES											
December 2006	549.0	966.8	47.0	4.6	60.9	552.4	962.1	48.5	4.8	60.7	1 665.2
December 2007	555.6	988.0	43.6	4.2	60.7	557.1	987.8	42.6	4.1	60.6	1 699.8
2008											
December	570.5	1 026.0	41.6	3.9	61.4	560.2	1 027.1	40.2	3.8	61.3	1 740.0
2009											
January	572.3	1 027.4	43.1	4.0	61.4	577.6	1 028.9	43.5	4.1	61.5	1 743.4
February	574.7	1 028.1	44.9	4.2	61.4	574.2	1 032.0	44.5	4.1	61.6	1 746.8
March	575.8	1 027.1	46.7	4.4	61.4	575.8	1 024.6	49.0	4.6	61.3	1 750.1
April	574.9	1 024.4	48.8	4.6	61.2	580.3	1 025.1	48.6	4.5	61.3	1 752.4
May	572.2	1 021.3	51.3	4.8	61.1	568.4	1 023.2	51.2	4.8	61.2	1 755.2
June	568.8	1 018.5	54.1	5.0	61.0	573.8	1 018.0	52.1	4.9	60.9	1 758.0
July	565.7	1 017.1	57.3	5.3	61.0	566.6	1 012.8	56.8	5.3	60.7	1 761.8
August	564.4	1 017.6	60.4	5.6	61.1	552.7	1 018.2	58.0	5.4	61.0	1 765.5
September	564.6	1 019.6	62.9	5.8	61.2	564.5	1 016.9	70.6	6.5	61.5	1 769.2
October	565.9	1 022.4	64.7	6.0	61.3	570.5	1 026.0	62.9	5.8	61.4	1 773.0
November	567.7	1 025.7	65.9	6.0	61.5	568.8	1 019.5	66.6	6.1	61.1	1 776.7
December	569.2	1 029.1	66.4	6.1	61.6	571.2	1 038.0	62.9	5.7	61.8	1 780.5
PERSONS											
December 2006	1 544.9	2 126.4	90.8	4.1	67.4	1 551.2	2 123.8	91.7	4.1	67.3	3 291.0
December 2007	1 575.2	2 176.1	82.1	3.6	67.1	1 579.0	2 176.6	81.0	3.6	67.2	3 361.5
2008											
December	1 611.7	2 231.8	96.3	4.1	67.6	1 597.3	2 226.1	93.8	4.0	67.4	3 444.3
2009											
January	1 611.7	2 233.2	102.0	4.4	67.7	1 613.7	2 228.8	104.0	4.5	67.6	3 451.4
February	1 612.2	2 233.4	108.0	4.6	67.7	1 613.3	2 241.1	108.7	4.6	67.9	3 458.5
March	1 611.1	2 231.5	113.8	4.9	67.7	1 608.6	2 232.8	114.8	4.9	67.7	3 465.6
April	1 608.0	2 227.8	119.3	5.1	67.6	1 618.3	2 230.8	116.9	5.0	67.6	3 470.5
May	1 603.6	2 223.9	124.4	5.3	67.5	1 599.2	2 226.2	126.5	5.4	67.7	3 476.4
June	1 598.6	2 220.5	129.4	5.5	67.5	1 600.5	2 208.9	128.3	5.5	67.1	3 482.3
July	1 593.7	2 219.0	133.8	5.7	67.4	1 592.9	2 217.6	136.3	5.8	67.5	3 489.6
August	1 590.4	2 220.0	137.6	5.8	67.4	1 580.7	2 223.7	129.9	5.5	67.3	3 497.0
September	1 588.5	2 222.8	140.5	5.9	67.4	1 591.6	2 222.8	149.6	6.3	67.7	3 504.3
October	1 587.5	2 226.0	142.7	6.0	67.4	1 591.8	2 228.0	142.8	6.0	67.5	3 511.9
November	1 587.0	2 229.3	144.1	6.1	67.5	1 585.5	2 220.9	143.5	6.1	67.2	3 519.5
December	1 586.5	2 233.0	144.9	6.1	67.5	1 586.9	2 241.7	141.7	5.9	67.6	3 527.2

	TREND					SEASONALLY ADJUSTED					Civilian population aged 15 years and over '000
	Employed full time	Total employed	Total unemp-loyed	Unemp-loyment rate	Partici-pation rate	Employed full time	Total employed	Total unemp-loyed	Unemp-loyment rate	Partici-pation rate	
	'000	'000	'000	%	%	'000	'000	'000	%	%	
MALES											
December 2006	346.1	412.6	24.0	5.5	69.4	343.9	412.2	26.0	5.9	69.7	628.8
December 2007	350.4	423.7	21.8	4.9	70.0	349.4	422.9	24.3	5.4	70.3	636.5
2008											
December	362.7	429.0	24.7	5.5	70.4	362.9	428.3	23.6	5.2	70.1	644.8
2009											
January	360.6	426.9	25.5	5.6	70.1	359.8	426.5	24.6	5.5	69.9	645.5
February	358.6	424.9	26.2	5.8	69.8	355.0	425.0	26.9	6.0	69.9	646.2
March	356.1	423.1	26.9	6.0	69.6	354.0	421.3	28.6	6.3	69.5	646.8
April	353.1	421.7	27.4	6.1	69.4	358.9	421.9	27.6	6.1	69.4	647.3
May	350.0	421.0	27.7	6.2	69.3	353.5	422.6	26.7	5.9	69.3	647.9
June	346.9	421.1	27.7	6.2	69.2	346.5	421.7	26.7	5.9	69.1	648.5
July	344.6	422.0	27.7	6.2	69.3	338.8	420.5	28.1	6.3	69.1	649.1
August	343.7	423.5	27.4	6.1	69.4	337.6	419.0	28.1	6.3	68.8	649.7
September	344.2	425.5	27.0	6.0	69.6	351.5	430.2	28.4	6.2	70.5	650.3
October	345.7	427.6	26.4	5.8	69.7	344.5	427.2	25.1	5.5	69.5	651.1
November	347.5	429.5	25.6	5.6	69.8	345.7	429.2	26.1	5.7	69.8	651.9
December	349.4	431.3	24.9	5.5	69.9	353.0	432.6	23.5	5.2	69.9	652.7
FEMALES											
December 2006	178.3	353.7	18.1	4.9	56.6	178.8	355.3	18.9	5.0	57.0	656.9
December 2007	189.4	358.8	17.4	4.6	56.6	190.1	361.3	17.1	4.5	56.9	664.5
2008											
December	179.2	361.9	22.0	5.7	57.1	177.7	359.9	21.4	5.6	56.7	672.6
2009											
January	180.1	363.9	21.8	5.7	57.3	179.7	363.1	22.7	5.9	57.3	673.2
February	181.9	366.6	21.3	5.5	57.6	181.9	366.3	21.3	5.5	57.5	673.9
March	183.8	369.3	20.5	5.3	57.8	184.5	367.8	20.6	5.3	57.6	674.5
April	185.3	371.3	19.9	5.1	57.9	187.0	375.0	19.6	5.0	58.5	675.1
May	185.6	371.9	19.4	5.0	57.9	185.8	373.5	19.0	4.8	58.1	675.6
June	185.0	371.5	19.2	4.9	57.8	185.0	371.4	19.0	4.9	57.7	676.2
July	183.7	370.2	19.2	4.9	57.5	185.1	370.5	19.1	4.9	57.6	676.8
August	182.2	368.5	19.4	5.0	57.3	178.5	363.8	20.2	5.2	56.7	677.4
September	181.0	367.0	19.7	5.1	57.0	183.8	368.3	19.6	5.1	57.2	678.0
October	180.2	365.8	19.9	5.2	56.8	178.1	368.3	19.2	5.0	57.1	678.8
November	179.6	364.6	20.2	5.3	56.6	179.6	365.3	20.3	5.3	56.7	679.5
December	179.2	363.5	20.5	5.3	56.5	180.4	360.5	21.2	5.5	56.1	680.3
PERSONS											
December 2006	524.4	766.2	42.1	5.2	62.9	522.7	767.5	44.9	5.5	63.2	1 285.7
December 2007	539.8	782.4	39.3	4.8	63.1	539.5	784.2	41.4	5.0	63.5	1 301.0
2008											
December	541.9	790.9	46.7	5.6	63.6	540.6	788.2	45.0	5.4	63.2	1 317.4
2009											
January	540.7	790.8	47.3	5.6	63.6	539.5	789.6	47.3	5.7	63.5	1 318.7
February	540.4	791.5	47.5	5.7	63.6	537.0	791.2	48.1	5.7	63.6	1 320.0
March	539.9	792.4	47.4	5.6	63.6	538.4	789.1	49.2	5.9	63.4	1 321.3
April	538.4	792.9	47.3	5.6	63.5	545.9	796.9	47.2	5.6	63.8	1 322.5
May	535.6	793.0	47.1	5.6	63.5	539.3	796.2	45.7	5.4	63.6	1 323.6
June	531.8	792.6	46.9	5.6	63.4	531.5	793.1	45.6	5.4	63.3	1 324.7
July	528.2	792.1	46.9	5.6	63.3	523.9	791.0	47.2	5.6	63.2	1 325.9
August	525.9	792.1	46.8	5.6	63.2	516.1	782.8	48.2	5.8	62.6	1 327.1
September	525.2	792.5	46.7	5.6	63.2	535.3	798.5	48.1	5.7	63.7	1 328.3
October	525.9	793.3	46.3	5.5	63.1	522.6	795.5	44.3	5.3	63.1	1 329.9
November	527.0	794.1	45.9	5.5	63.1	525.3	794.5	46.3	5.5	63.2	1 331.4
December	528.7	794.8	45.4	5.4	63.1	533.4	793.1	44.7	5.3	62.9	1 332.9

	TREND					SEASONALLY ADJUSTED					Civilian population aged 15 years and over '000
	Employed full time	Total employed	Total unemp-loyed	Unemp-loyment rate	Partici-pation rate	Employed full time	Total employed	Total unemp-loyed	Unemp-loyment rate	Partici-pation rate	
	'000	'000	'000	%	%	'000	'000	'000	%	%	
MALES											
December 2006	528.3	611.4	18.7	3.0	75.5	526.6	608.7	19.5	3.1	75.3	834.1
December 2007	546.4	634.6	20.8	3.2	76.4	545.6	633.0	22.0	3.4	76.4	857.0
2008											
December	573.3	660.6	20.4	3.0	77.1	576.2	666.3	19.2	2.8	77.6	883.9
2009											
January	568.6	657.8	23.4	3.4	76.9	570.5	656.1	22.2	3.3	76.5	886.2
February	563.8	655.6	26.8	3.9	76.8	557.6	651.4	26.2	3.9	76.3	888.5
March	559.2	653.9	30.1	4.4	76.8	556.0	649.5	35.6	5.2	76.9	890.9
April	554.9	652.7	32.9	4.8	76.8	558.9	655.0	30.4	4.4	76.7	893.3
May	551.3	652.1	35.0	5.1	76.8	554.1	659.9	34.0	4.9	77.5	895.3
June	548.5	651.9	36.4	5.3	76.7	551.2	652.0	35.8	5.2	76.7	897.2
July	547.2	652.2	36.8	5.3	76.6	540.0	643.4	39.6	5.8	75.9	899.7
August	547.3	653.1	36.4	5.3	76.4	545.2	653.8	36.1	5.2	76.5	902.1
September	548.9	654.8	35.6	5.2	76.3	548.6	656.0	36.9	5.3	76.6	904.5
October	551.3	657.1	34.5	5.0	76.2	552.4	658.6	33.4	4.8	76.3	907.4
November	554.0	659.4	33.2	4.8	76.1	557.6	658.8	32.4	4.7	75.9	910.3
December	556.6	661.9	32.0	4.6	76.1	557.2	663.6	31.3	4.5	76.1	913.1
FEMALES											
December 2006	246.1	477.1	18.3	3.7	59.6	250.8	476.3	18.2	3.7	59.5	830.6
December 2007	268.0	497.6	18.3	3.5	60.7	267.6	497.0	16.6	3.2	60.4	850.0
2008											
December	273.0	512.5	19.2	3.6	61.0	270.5	515.8	18.3	3.4	61.3	871.6
2009											
January	273.2	512.5	21.3	4.0	61.1	273.5	506.2	20.1	3.8	60.2	873.5
February	273.7	512.5	23.4	4.4	61.2	272.3	513.9	25.0	4.6	61.6	875.4
March	273.5	512.4	25.1	4.7	61.3	273.4	515.8	25.8	4.8	61.7	877.2
April	272.4	511.7	26.6	4.9	61.3	274.9	509.1	26.6	5.0	61.0	878.8
May	270.3	510.2	27.7	5.2	61.1	277.5	512.9	27.9	5.2	61.4	880.3
June	267.8	507.8	28.5	5.3	60.8	264.8	508.2	27.5	5.1	60.7	881.9
July	265.9	505.4	29.0	5.4	60.4	257.3	504.5	29.0	5.4	60.3	883.9
August	264.9	503.7	29.5	5.5	60.2	265.2	505.4	29.5	5.5	60.4	885.9
September	264.8	503.2	30.0	5.6	60.0	268.1	496.5	32.5	6.1	59.6	887.9
October	265.3	503.6	30.5	5.7	60.0	266.4	503.4	27.4	5.2	59.6	890.2
November	265.8	504.4	31.0	5.8	60.0	265.8	506.8	31.5	5.9	60.3	892.5
December	266.8	505.7	31.4	5.8	60.1	265.7	509.1	32.2	5.9	60.5	894.8
PERSONS											
December 2006	774.4	1 088.5	37.0	3.3	67.6	777.4	1 085.0	37.7	3.4	67.4	1 664.7
December 2007	814.4	1 132.2	39.1	3.3	68.6	813.2	1 130.0	38.6	3.3	68.5	1 707.0
2008											
December	846.3	1 173.1	39.6	3.3	69.1	846.6	1 182.1	37.6	3.1	69.5	1 755.5
2009											
January	841.8	1 170.3	44.7	3.7	69.0	844.0	1 162.3	42.4	3.5	68.5	1 759.7
February	837.4	1 168.1	50.2	4.1	69.1	829.9	1 165.2	51.2	4.2	69.0	1 763.9
March	832.7	1 166.2	55.3	4.5	69.1	829.4	1 165.3	61.3	5.0	69.4	1 768.1
April	827.3	1 164.4	59.5	4.9	69.1	833.8	1 164.1	57.0	4.7	68.9	1 772.1
May	821.6	1 162.3	62.7	5.1	69.0	831.6	1 172.8	61.9	5.0	69.5	1 775.6
June	816.3	1 159.6	64.9	5.3	68.8	816.0	1 160.1	63.3	5.2	68.8	1 779.1
July	813.0	1 157.6	65.8	5.4	68.6	797.3	1 147.9	68.5	5.6	68.2	1 783.6
August	812.2	1 156.8	65.9	5.4	68.4	810.4	1 159.2	65.6	5.4	68.5	1 788.0
September	813.7	1 158.0	65.7	5.4	68.2	816.7	1 152.5	69.4	5.7	68.2	1 792.4
October	816.7	1 160.6	65.0	5.3	68.2	818.8	1 162.0	60.8	5.0	68.0	1 797.6
November	819.8	1 163.8	64.2	5.2	68.1	823.4	1 165.6	63.9	5.2	68.2	1 802.7
December	823.3	1 167.6	63.4	5.2	68.2	822.9	1 172.7	63.5	5.1	68.4	1 807.9

LABOUR FORCE STATUS (AGED 15 YEARS & OVER)—Tasmania

	TREND					SEASONALLY ADJUSTED					Civilian population aged 15 years and over
	Employed full time	Total employed	Total unemp-loyed	Unemp-loyment rate	Partici-pation rate	Employed full time	Total employed	Total unemp-loyed	Unemp-loyment rate	Partici-pation rate	
	'000	'000	'000	%	%	'000	'000	'000	%	%	
MALES											
December 2006	101.4	120.9	7.7	6.0	66.8	100.8	121.3	7.6	5.9	66.9	192.5
December 2007	106.2	126.2	5.8	4.4	67.9	106.9	125.7	5.9	4.5	67.7	194.5
2008											
December	109.1	131.1	5.3	3.9	69.3	109.1	129.2	5.3	4.0	68.4	196.7
2009											
January	107.8	130.0	5.8	4.2	68.9	108.6	130.4	5.4	4.0	69.0	196.9
February	106.6	129.0	6.2	4.6	68.6	106.9	131.5	5.9	4.3	69.7	197.1
March	105.4	128.0	6.5	4.8	68.2	105.3	127.6	6.4	4.8	67.9	197.3
April	104.4	126.8	6.6	5.0	67.6	103.8	125.5	7.6	5.7	67.4	197.4
May	103.6	125.7	6.7	5.0	67.0	103.4	125.8	7.4	5.5	67.4	197.6
June	103.1	124.8	6.7	5.1	66.4	102.5	125.1	6.3	4.8	66.5	197.7
July	103.0	124.1	6.7	5.1	66.1	103.5	124.1	5.1	4.0	65.3	198.0
August	102.9	123.8	6.9	5.3	65.9	103.1	123.1	7.0	5.4	65.6	198.2
September	102.8	123.5	7.2	5.5	65.8	103.2	124.1	7.7	5.8	66.4	198.5
October	102.5	123.3	7.5	5.7	65.8	102.0	122.9	8.2	6.2	66.0	198.7
November	102.3	123.2	7.7	5.9	65.8	102.9	123.0	7.5	5.7	65.6	198.9
December	102.0	123.1	8.0	6.1	65.9	101.3	123.6	7.6	5.8	65.9	199.1
FEMALES											
December 2006	53.4	103.5	5.9	5.4	54.0	53.5	103.4	5.8	5.3	53.9	202.5
December 2007	52.7	104.8	6.6	6.0	54.6	52.9	105.5	6.7	6.0	54.9	204.3
2008											
December	55.1	108.7	5.7	5.0	55.4	54.3	107.4	6.7	5.9	55.3	206.3
2009											
January	55.0	108.9	5.8	5.1	55.5	55.2	107.7	5.9	5.2	55.0	206.5
February	54.9	108.9	6.0	5.2	55.6	56.8	112.1	5.7	4.8	56.9	206.7
March	54.8	109.0	6.0	5.2	55.6	54.0	109.6	4.5	3.9	55.1	206.9
April	54.6	109.1	5.9	5.1	55.6	53.6	107.4	7.6	6.6	55.5	207.1
May	54.3	109.3	5.8	5.0	55.5	54.1	107.8	6.3	5.5	55.1	207.3
June	54.1	109.4	5.7	5.0	55.5	54.9	109.6	5.2	4.5	55.3	207.5
July	54.0	109.5	5.6	4.8	55.4	55.1	112.2	4.9	4.2	56.4	207.6
August	53.8	109.6	5.4	4.7	55.4	52.5	108.4	5.6	4.9	54.8	207.8
September	53.6	109.5	5.4	4.7	55.2	53.3	109.8	5.7	5.0	55.5	208.0
October	53.3	109.2	5.4	4.7	55.0	53.5	108.9	5.2	4.5	54.8	208.2
November	53.1	108.9	5.4	4.7	54.8	54.7	108.4	5.7	5.0	54.7	208.4
December	52.8	108.5	5.5	4.8	54.7	51.4	108.8	5.2	4.6	54.7	208.6
PERSONS											
December 2006	154.8	224.4	13.6	5.7	60.2	154.3	224.7	13.4	5.6	60.3	395.1
December 2007	159.0	231.0	12.5	5.1	61.0	159.8	231.1	12.6	5.2	61.1	398.7
2008											
December	164.1	239.7	11.0	4.4	62.2	163.4	236.5	12.0	4.8	61.7	403.1
2009											
January	162.8	238.9	11.6	4.6	62.1	163.8	238.1	11.3	4.5	61.8	403.4
February	161.5	238.0	12.2	4.9	61.9	163.8	243.5	11.5	4.5	63.2	403.8
March	160.2	237.0	12.5	5.0	61.7	159.3	237.2	10.9	4.4	61.4	404.1
April	159.0	236.0	12.5	5.1	61.4	157.4	232.8	15.1	6.1	61.3	404.6
May	157.9	235.0	12.5	5.0	61.1	157.4	233.6	13.7	5.5	61.1	404.9
June	157.3	234.2	12.4	5.0	60.8	157.4	234.7	11.5	4.7	60.8	405.2
July	157.0	233.6	12.3	5.0	60.6	158.7	236.3	10.0	4.1	60.7	405.6
August	156.8	233.4	12.3	5.0	60.5	155.6	231.5	12.6	5.1	60.1	406.1
September	156.4	233.0	12.5	5.1	60.4	156.5	233.9	13.4	5.4	60.8	406.5
October	155.9	232.5	12.9	5.2	60.3	155.4	231.8	13.3	5.4	60.2	406.9
November	155.3	232.0	13.2	5.4	60.2	157.6	231.4	13.1	5.4	60.0	407.3
December	154.8	231.6	13.4	5.5	60.1	152.8	232.4	12.9	5.2	60.2	407.7

	TREND					<i>Civilian population aged 15 years and over</i>
	<i>Employed full time</i>	<i>Total employed</i>	<i>Total unemployed</i>	<i>Unemployment rate</i>	<i>Participation rate</i>	
	'000	'000	'000	%	%	
MALES						
December 2006	48.5	56.6	1.9	3.3	73.9	79.1
December 2007	51.8	60.0	3.1	5.0	77.4	81.6
2008						
December	54.9	62.0	2.6	4.1	77.1	83.8
2009						
January	55.8	62.6	2.8	4.2	77.9	83.9
February	56.7	63.4	2.9	4.3	78.8	84.1
March	57.4	64.0	3.0	4.4	79.6	84.3
April	57.8	64.6	3.1	4.5	80.2	84.3
May	57.9	64.9	3.1	4.6	80.5	84.4
June	57.8	65.0	3.1	4.6	80.5	84.5
July	57.6	65.1	3.1	4.5	80.3	84.8
August	57.5	65.2	2.9	4.3	80.0	85.1
September	57.5	65.3	2.7	4.0	79.7	85.4
October	57.7	65.5	2.6	3.8	79.6	85.5
November	57.9	65.7	2.4	3.5	79.5	85.7
December	58.2	66.0	2.2	3.2	79.4	85.8
FEMALES						
December 2006	35.9	48.7	1.1	2.2	65.0	76.6
December 2007	36.7	51.8	2.7	5.0	69.4	78.6
2008						
December	37.3	53.2	2.1	3.8	68.9	80.4
2009						
January	37.8	53.5	2.1	3.7	69.0	80.5
February	38.4	54.0	2.0	3.5	69.3	80.7
March	39.0	54.5	1.9	3.3	69.7	80.9
April	39.4	54.8	1.9	3.3	69.9	81.1
May	39.3	54.7	1.9	3.4	69.7	81.2
June	39.0	54.3	2.0	3.5	69.1	81.4
July	38.6	53.9	2.0	3.6	68.6	81.6
August	38.4	53.8	2.0	3.6	68.2	81.8
September	38.4	53.9	2.0	3.6	68.2	82.0
October	38.8	54.3	2.0	3.5	68.5	82.2
November	39.2	54.8	1.9	3.4	68.9	82.3
December	39.8	55.4	1.9	3.3	69.4	82.5
PERSONS						
December 2006	84.4	105.3	3.0	2.8	69.5	155.8
December 2007	88.5	111.8	5.9	5.0	73.5	160.2
2008						
December	92.3	115.2	4.8	4.0	73.1	164.1
2009						
January	93.6	116.1	4.8	4.0	73.5	164.5
February	95.1	117.3	4.8	4.0	74.1	164.8
March	96.4	118.5	4.8	3.9	74.8	165.1
April	97.2	119.3	4.9	3.9	75.1	165.4
May	97.3	119.5	5.0	4.0	75.2	165.6
June	96.8	119.3	5.1	4.1	74.9	165.9
July	96.2	119.0	5.1	4.1	74.6	166.4
August	95.9	119.0	4.9	4.0	74.2	166.9
September	95.9	119.2	4.7	3.8	74.1	167.4
October	96.4	119.8	4.5	3.6	74.1	167.7
November	97.1	120.5	4.3	3.4	74.3	168.0
December	97.9	121.3	4.1	3.2	74.5	168.3

	TREND					Civilian population aged 15 years and over
	Employed full time	Total employed	Total unemployed	Unemployment rate	Participation rate	
	'000	'000	'000	%	%	
MALES						
December 2006	85.4	100.0	3.2	3.1	78.7	131.1
December 2007	86.1	101.0	2.7	2.6	77.8	133.2
2008						
December	87.7	102.5	2.8	2.7	77.7	135.5
2009						
January	87.5	102.2	2.8	2.7	77.4	135.7
February	87.1	101.7	3.0	2.9	77.1	135.9
March	86.6	101.1	3.3	3.1	76.8	136.0
April	86.0	100.6	3.5	3.4	76.5	136.1
May	85.5	100.2	3.8	3.7	76.4	136.2
June	85.0	100.0	4.0	3.9	76.3	136.4
July	84.8	100.0	4.2	4.0	76.3	136.4
August	84.8	100.1	4.3	4.1	76.4	136.5
September	85.0	100.3	4.3	4.1	76.5	136.6
October	85.3	100.6	4.4	4.2	76.7	136.9
November	85.7	101.0	4.5	4.3	76.9	137.1
December	86.1	101.2	4.6	4.4	77.1	137.3
FEMALES						
December 2006	61.3	93.9	2.8	2.9	70.0	138.1
December 2007	60.8	92.0	2.3	2.4	67.4	139.9
2008						
December	59.8	94.4	2.2	2.3	68.1	141.8
2009						
January	59.9	94.4	2.3	2.4	68.1	142.0
February	60.3	94.3	2.5	2.6	68.0	142.2
March	60.6	94.1	2.7	2.8	68.0	142.4
April	60.9	93.9	2.9	3.0	67.9	142.4
May	61.0	93.6	3.0	3.1	67.8	142.6
June	60.9	93.4	3.1	3.2	67.6	142.7
July	60.8	93.3	3.1	3.2	67.5	142.8
August	60.9	93.4	3.0	3.1	67.5	142.9
September	61.2	93.6	3.0	3.1	67.6	142.9
October	61.5	93.9	3.0	3.1	67.7	143.1
November	61.9	94.1	3.0	3.0	67.7	143.4
December	62.2	94.4	2.9	3.0	67.8	143.6
PERSONS						
December 2006	146.7	193.8	6.0	3.0	74.3	269.2
December 2007	146.9	193.0	5.0	2.5	72.5	273.1
2008						
December	147.5	196.9	5.1	2.5	72.8	277.3
2009						
January	147.5	196.5	5.2	2.6	72.6	277.7
February	147.4	195.9	5.5	2.7	72.4	278.1
March	147.2	195.2	6.0	3.0	72.3	278.4
April	146.9	194.5	6.4	3.2	72.1	278.5
May	146.4	193.9	6.8	3.4	72.0	278.8
June	145.9	193.4	7.1	3.6	71.9	279.1
July	145.6	193.3	7.3	3.6	71.8	279.2
August	145.7	193.5	7.3	3.6	71.9	279.4
September	146.2	194.0	7.3	3.6	71.9	279.5
October	146.8	194.5	7.4	3.6	72.1	280.0
November	147.6	195.1	7.4	3.7	72.2	280.4
December	148.3	195.6	7.6	3.7	72.4	280.9

Original—December 2009

	EMPLOYED			UNEMPLOYED		Labour force	Not in labour force	Civilian population aged 15 years and over	UNEMPLOYMENT RATE		Participation rate
	Full time	Part time	Total	Looking for f/t work	Total				Looking for f/t work	Total	
	'000	'000	'000	'000	'000				'000	'000	
MALES											
New South Wales	1 582.6	307.2	1 889.8	97.9	123.4	2 013.3	805.1	2 818.4	5.8	6.1	71.4
Victoria	1 230.2	271.8	1 502.0	61.1	77.9	1 579.9	592.0	2 171.9	4.7	4.9	72.7
Queensland	1 026.9	191.0	1 217.8	62.3	74.2	1 292.0	454.7	1 746.7	5.7	5.7	74.0
South Australia	359.6	80.1	439.7	18.5	22.1	461.8	190.9	652.7	4.9	4.8	70.8
Western Australia	567.9	106.5	674.4	22.8	28.7	703.1	210.1	913.1	3.9	4.1	77.0
Tasmania	103.6	21.8	125.4	6.6	8.1	133.6	65.5	199.1	6.0	6.1	67.1
Northern Territory	59.6	7.3	66.9	1.6	2.1	69.0	16.8	85.8	2.6	3.0	80.4
Australian Capital Territory	89.0	14.3	103.3	3.4	4.6	107.8	29.5	137.3	3.7	4.2	78.5
Australia	5 019.4	1 000.0	6 019.3	274.3	341.2	6 360.5	2 364.6	8 725.1	5.2	5.4	72.9
FEMALES											
New South Wales	864.1	708.8	1 572.9	56.5	88.1	1 660.9	1 268.0	2 928.9	6.1	5.3	56.7
Victoria	683.1	581.0	1 264.1	39.3	73.1	1 337.2	915.8	2 253.1	5.4	5.5	59.4
Queensland	580.7	465.8	1 046.5	41.4	57.9	1 104.4	676.1	1 780.5	6.7	5.2	62.0
South Australia	183.5	181.4	364.9	13.1	22.3	387.3	293.0	680.3	6.7	5.8	56.9
Western Australia	271.7	246.5	518.2	17.1	28.1	546.3	348.4	894.8	5.9	5.2	61.1
Tasmania	51.5	58.0	109.5	3.6	5.6	115.1	93.5	208.6	6.5	4.9	55.2
Northern Territory	39.7	16.2	56.0	1.4	2.1	58.1	24.4	82.5	3.5	3.6	70.4
Australian Capital Territory	63.3	32.4	95.7	*2.0	2.6	98.3	45.3	143.6	*3.0	2.7	68.5
Australia	2 737.6	2 290.1	5 027.7	174.4	280.0	5 307.7	3 664.5	8 972.1	6.0	5.3	59.2
PERSONS											
New South Wales	2 446.7	1 016.0	3 462.7	154.5	211.5	3 674.2	2 073.1	5 747.3	5.9	5.8	63.9
Victoria	1 913.3	852.8	2 766.1	100.4	151.0	2 917.1	1 507.8	4 425.0	5.0	5.2	65.9
Queensland	1 607.5	656.7	2 264.3	103.7	132.1	2 396.4	1 130.8	3 527.2	6.1	5.5	67.9
South Australia	543.1	261.6	804.6	31.6	44.5	849.1	483.8	1 332.9	5.5	5.2	63.7
Western Australia	839.5	353.0	1 192.5	39.9	56.8	1 249.4	558.5	1 807.9	4.5	4.5	69.1
Tasmania	155.1	79.9	235.0	10.2	13.7	248.7	159.0	407.7	6.2	5.5	61.0
Northern Territory	99.4	23.5	122.9	3.0	4.2	127.1	41.2	168.3	2.9	3.3	75.5
Australian Capital Territory	152.3	46.7	199.0	5.4	7.2	206.2	74.8	280.9	3.4	3.5	73.4
Australia	7 757.0	3 290.1	11 047.1	448.8	621.1	11 668.2	6 029.1	17 697.2	5.5	5.3	65.9

* estimate is subject to sampling variability too high for most practical purposes

	EMPLOYED		UNEMPLOYED		UNEMPLOYMENT RATE		Participation rate	Employment to population ratio	Unemployment to population ratio – looking for full-time work
	Full time	Total	Looking for f/t work	Total	Looking for f/t work	Total			
	'000	'000	'000	'000	%	%			
MALES									
December 2006	154.3	363.2	33.0	60.0	17.6	14.2	58.0	49.7	4.5
December 2007	171.4	379.3	32.5	60.0	16.0	13.7	59.1	51.1	4.4
2008									
December	159.7	365.9	32.5	63.2	16.9	14.7	57.0	48.6	4.3
2009									
January	154.6	360.5	35.9	67.8	18.8	15.8	56.8	47.8	4.8
February	150.0	355.8	39.5	72.0	20.8	16.8	56.7	47.2	5.2
March	145.7	351.8	42.4	75.6	22.6	17.7	56.6	46.6	5.6
April	141.6	348.3	44.1	78.1	23.8	18.3	56.4	46.1	5.8
May	138.2	345.5	44.3	79.0	24.2	18.6	56.2	45.7	5.9
June	136.0	343.7	43.4	78.6	24.2	18.6	55.8	45.4	5.7
July	134.9	343.3	42.3	77.6	23.8	18.4	55.6	45.3	5.6
August	134.6	343.7	41.4	76.6	23.5	18.2	55.4	45.3	5.5
September	134.8	344.8	41.0	75.7	23.3	18.0	55.4	45.4	5.4
October	135.5	345.9	40.7	75.1	23.1	17.8	55.4	45.5	5.4
November	136.2	346.7	40.6	74.8	23.0	17.7	55.4	45.5	5.3
December	137.0	347.4	40.8	74.9	22.9	17.7	55.4	45.6	5.4
FEMALES									
December 2006	84.9	360.5	26.9	58.2	24.0	13.9	60.3	51.9	3.9
December 2007	91.8	371.4	23.8	58.3	20.6	13.6	60.9	52.6	3.4
2008									
December	76.9	364.7	23.9	56.1	23.7	13.3	58.7	50.9	3.3
2009									
January	77.0	362.8	25.2	58.3	24.6	13.8	58.7	50.5	3.5
February	77.9	361.0	26.8	60.5	25.5	14.3	58.7	50.3	3.7
March	79.5	358.9	28.4	62.5	26.3	14.8	58.6	49.9	4.0
April	80.9	356.4	29.5	64.3	26.8	15.3	58.5	49.5	4.1
May	81.4	353.9	30.0	65.2	27.0	15.6	58.2	49.2	4.2
June	80.9	351.7	30.2	65.1	27.2	15.6	57.8	48.8	4.2
July	79.8	350.9	30.2	64.5	27.5	15.5	57.6	48.6	4.2
August	79.0	351.9	30.2	63.7	27.7	15.3	57.5	48.7	4.2
September	79.1	354.5	30.0	63.1	27.5	15.1	57.7	49.0	4.1
October	79.7	357.3	29.8	62.8	27.2	14.9	57.9	49.3	4.1
November	80.5	360.0	29.4	62.7	26.7	14.8	58.2	49.6	4.1
December	81.4	362.6	28.9	62.4	26.2	14.7	58.5	49.9	4.0
PERSONS									
December 2006	239.2	723.7	59.9	118.2	20.0	14.0	59.1	50.8	4.2
December 2007	263.2	750.7	56.4	118.3	17.6	13.6	60.0	51.8	3.9
2008									
December	236.6	730.6	56.4	119.4	19.3	14.0	57.8	49.7	3.8
2009									
January	231.6	723.4	61.1	126.0	20.8	14.8	57.7	49.1	4.2
February	227.9	716.8	66.3	132.5	22.5	15.6	57.7	48.7	4.5
March	225.2	710.6	70.8	138.2	23.9	16.3	57.6	48.2	4.8
April	222.5	704.7	73.6	142.5	24.9	16.8	57.4	47.8	5.0
May	219.7	699.4	74.3	144.2	25.3	17.1	57.2	47.4	5.0
June	216.9	695.5	73.7	143.8	25.3	17.1	56.8	47.1	5.0
July	214.7	694.1	72.5	142.1	25.2	17.0	56.5	46.9	4.9
August	213.6	695.7	71.7	140.3	25.1	16.8	56.4	47.0	4.8
September	213.9	699.3	71.0	138.8	24.9	16.6	56.5	47.1	4.8
October	215.2	703.2	70.4	137.9	24.6	16.4	56.6	47.3	4.7
November	216.7	706.6	70.0	137.5	24.4	16.3	56.8	47.5	4.7
December	218.4	710.0	69.7	137.3	24.2	16.2	56.9	47.7	4.7

	EMPLOYED		UNEMPLOYED		UNEMPLOYMENT RATE		Participation rate	Employment to population ratio	Unemployment to population ratio – looking for full-time work
	Full time	Total	Looking for f/t work	Total	Looking for f/t work	Total			
	'000	'000	'000	'000	%	%			
MALES									
December 2006	154.4	364.2	32.4	59.7	17.3	14.1	58.1	49.9	4.4
December 2007	169.0	375.8	34.1	62.4	16.8	14.2	59.0	50.6	4.6
2008									
December	162.7	368.6	32.9	61.8	16.8	14.4	57.1	48.9	4.4
2009									
January	157.2	357.3	31.8	68.3	16.8	16.1	56.4	47.4	4.2
February	149.2	354.7	46.2	76.0	23.7	17.7	57.1	47.0	6.1
March	140.2	351.7	45.1	76.4	24.3	17.8	56.7	46.6	6.0
April	143.9	346.9	40.0	76.9	21.7	18.1	56.1	45.9	5.3
May	140.3	349.9	44.9	79.7	24.3	18.6	56.8	46.3	5.9
June	138.1	348.0	42.4	74.9	23.5	17.7	55.9	46.0	5.6
July	129.5	332.1	48.7	85.5	27.3	20.5	55.1	43.8	6.4
August	133.3	343.9	35.4	73.5	21.0	17.6	55.0	45.3	4.7
September	137.1	344.6	40.5	73.9	22.8	17.7	55.1	45.4	5.3
October	135.8	353.5	39.0	71.7	22.3	16.9	55.9	46.5	5.1
November	136.8	346.5	44.2	78.0	24.4	18.4	55.8	45.5	5.8
December	137.2	343.4	40.7	75.9	22.9	18.1	55.0	45.1	5.3
FEMALES									
December 2006	83.7	360.2	28.7	61.3	25.5	14.5	60.7	51.9	4.1
December 2007	93.6	374.0	24.2	56.8	20.6	13.2	61.1	53.0	3.4
2008									
December	76.8	363.3	18.3	52.4	19.2	12.6	58.0	50.7	2.5
2009									
January	70.2	353.9	29.5	59.2	29.5	14.3	57.6	49.3	4.1
February	76.4	362.6	27.1	61.0	26.2	14.4	59.0	50.5	3.8
March	81.2	367.9	27.4	64.5	25.2	14.9	60.1	51.2	3.8
April	87.1	354.1	30.5	63.8	25.9	15.3	58.1	49.2	4.2
May	81.2	354.2	29.3	61.2	26.5	14.7	57.7	49.2	4.1
June	77.8	350.0	32.1	72.3	29.2	17.1	58.6	48.6	4.4
July	81.4	348.0	30.2	62.4	27.1	15.2	56.9	48.2	4.2
August	79.3	352.0	27.3	62.9	25.6	15.2	57.4	48.7	3.8
September	74.0	352.4	30.9	62.8	29.4	15.1	57.4	48.7	4.3
October	81.5	360.3	31.1	59.7	27.6	14.2	57.9	49.7	4.3
November	82.3	360.0	31.3	65.7	27.5	15.4	58.6	49.6	4.3
December	81.9	364.5	25.9	63.4	24.0	14.8	58.8	50.1	3.6
PERSONS									
December 2006	238.1	724.4	61.1	121.0	20.4	14.3	59.4	50.9	4.3
December 2007	262.6	749.7	58.4	119.2	18.2	13.7	60.0	51.8	4.0
2008									
December	239.5	731.9	51.1	114.2	17.6	13.5	57.5	49.8	3.5
2009									
January	227.4	711.2	61.3	127.5	21.2	15.2	57.0	48.3	4.2
February	225.6	717.3	73.3	137.0	24.5	16.0	58.0	48.7	5.0
March	221.3	719.6	72.5	140.8	24.7	16.4	58.4	48.8	4.9
April	230.9	701.0	70.5	140.6	23.4	16.7	57.1	47.5	4.8
May	221.6	704.1	74.3	140.9	25.1	16.7	57.3	47.7	5.0
June	215.9	698.0	74.5	147.2	25.6	17.4	57.2	47.3	5.0
July	210.9	680.0	78.9	147.8	27.2	17.9	56.0	46.0	5.3
August	212.6	695.9	62.7	136.4	22.8	16.4	56.2	47.0	4.2
September	211.2	697.0	71.4	136.7	25.3	16.4	56.2	47.0	4.8
October	217.3	713.8	70.2	131.3	24.4	15.5	56.9	48.1	4.7
November	219.1	706.5	75.5	143.6	25.6	16.9	57.2	47.5	5.1
December	219.1	708.0	66.6	139.3	23.3	16.4	56.9	47.5	4.5

	EMPLOYED			UNEMPLOYED			Civilian population aged 15–19 years	UNEMPLOYMENT RATE		Participation rate	Unemployment to population ratio – looking for full-time work	
	Full time	Part time	Total	Looking for f/t work	Total	Labour force		Not in labour force	Looking for f/t work			Total
	'000	'000	'000	'000	'000	'000		'000	%			%
NOT ATTENDING FULL-TIME EDUCATION												
Males												
December 2006	154.2	74.3	228.5	30.9	36.7	265.2	50.8	316.0	16.7	13.9	83.9	9.8
December 2007	161.8	71.9	233.7	31.2	37.3	271.0	52.6	323.7	16.2	13.8	83.7	9.7
December 2008	156.3	63.4	219.7	32.0	37.1	256.8	50.4	307.2	17.0	14.4	83.6	10.4
December 2009	129.6	71.8	201.4	37.4	44.1	245.5	57.4	302.9	22.4	18.0	81.1	12.4
Females												
December 2006	80.2	101.5	181.7	25.5	33.7	215.5	47.4	262.8	24.1	15.6	82.0	9.7
December 2007	89.3	87.6	176.9	18.7	23.7	200.6	47.0	247.6	17.3	11.8	81.0	7.5
December 2008	73.3	96.7	169.9	15.9	25.4	195.4	55.0	250.4	17.9	13.0	78.0	6.4
December 2009	76.7	108.5	185.2	21.3	30.4	215.7	62.6	278.3	21.8	14.1	77.5	7.7
Persons												
December 2006	234.4	175.8	410.2	56.4	70.4	480.6	98.2	578.8	19.4	14.7	83.0	9.7
December 2007	251.1	159.5	410.6	49.9	61.0	471.6	99.7	571.3	16.6	12.9	82.6	8.7
December 2008	229.6	160.1	389.7	47.9	62.5	452.2	105.4	557.6	17.3	13.8	81.1	8.6
December 2009	206.3	180.3	386.6	58.8	74.6	461.2	120.0	581.2	22.2	16.2	79.3	10.1
ATTENDING FULL-TIME EDUCATION												
Males												
December 2006	12.9	146.7	159.6	6.5	32.5	192.1	221.9	414.0	33.5	16.9	46.4	1.6
December 2007	21.5	145.1	166.6	8.1	35.2	201.8	217.1	418.9	27.4	17.5	48.2	1.9
December 2008	20.5	152.5	173.0	*5.9	35.1	208.1	238.2	446.3	*22.2	16.9	46.6	*1.3
December 2009	19.9	144.8	164.7	9.6	44.7	209.4	249.9	459.3	32.5	21.3	45.6	2.1
Females												
December 2006	13.9	187.5	201.4	7.4	37.4	238.8	192.6	431.5	34.8	15.7	55.4	1.7
December 2007	15.7	205.8	221.5	8.8	41.6	263.0	194.7	457.7	36.0	15.8	57.5	1.9
December 2008	12.9	204.8	217.8	*4.5	34.1	251.9	214.8	466.8	*25.7	13.6	54.0	*1.0
December 2009	15.3	188.7	204.1	7.3	41.0	245.1	203.7	448.8	32.3	16.7	54.6	1.6
Persons												
December 2006	26.8	334.3	361.1	13.9	69.9	430.9	414.5	845.4	34.2	16.2	51.0	1.6
December 2007	37.2	350.8	388.0	16.9	76.8	464.8	411.7	876.6	31.3	16.5	53.0	1.9
December 2008	33.4	357.3	390.8	10.3	69.2	460.0	453.0	913.0	23.6	15.1	50.4	1.1
December 2009	35.2	333.6	368.8	16.9	85.7	454.5	453.6	908.1	32.4	18.9	50.0	1.9
TOTAL												
Males												
December 2006	167.1	221.0	388.1	37.4	69.2	457.3	272.7	730.0	18.3	15.1	62.6	5.1
December 2007	183.3	217.0	400.3	39.4	72.5	472.8	269.7	742.5	17.7	15.3	63.7	5.3
December 2008	176.8	215.9	392.7	37.9	72.1	464.9	288.6	753.4	17.6	15.5	61.7	5.0
December 2009	149.5	216.6	366.1	47.0	88.8	454.9	307.2	762.1	23.9	19.5	59.7	6.2
Females												
December 2006	94.1	289.0	383.2	32.9	71.1	454.3	240.0	694.3	25.9	15.6	65.4	4.7
December 2007	105.0	293.3	398.4	27.5	65.3	463.7	241.7	705.3	20.8	14.1	65.7	3.9
December 2008	86.2	301.5	387.7	20.4	59.6	447.3	269.8	717.1	19.1	13.3	62.4	2.8
December 2009	92.0	297.3	389.3	28.7	71.4	460.8	266.4	727.1	23.7	15.5	63.4	3.9
Persons												
December 2006	261.2	510.1	771.3	70.3	140.3	911.6	512.7	1 424.3	21.2	15.4	64.0	4.9
December 2007	288.3	510.3	798.6	66.9	137.8	936.5	511.4	1 447.9	18.8	14.7	64.7	4.6
December 2008	263.0	517.4	780.4	58.3	131.7	912.2	558.4	1 470.6	18.1	14.4	62.0	4.0
December 2009	241.5	513.9	755.4	75.6	160.3	915.7	573.6	1 489.3	23.8	17.5	61.5	5.1

* estimate is subject to sampling variability too high for most practical purposes

	EMPLOYED			UNEMPLOYED			Labour force	Civilian population aged 15–19 years	UNEMPLOYMENT RATE			Unemployment to population ratio – looking for full-time work
	Full time	Part time	Total	Looking for f/t work	Total	Looking for f/t work			Total	Participation rate		
	'000	'000	'000	'000	'000	'000			'000	%	%	
NOT ATTENDING FULL-TIME EDUCATION												
New South Wales	63.3	54.7	118.0	25.0	32.0	150.0	40.1	190.1	28.3	21.3	78.9	13.1
Victoria	35.8	37.2	72.9	7.5	10.3	83.2	22.6	105.9	17.3	12.4	78.6	7.1
Queensland	53.2	42.4	95.6	15.2	17.8	113.4	27.4	140.9	22.2	15.7	80.5	10.8
South Australia	11.9	17.3	29.2	*3.2	4.1	33.3	9.2	42.4	*21.0	12.3	78.4	*7.4
Western Australia	31.4	19.7	51.1	5.1	6.9	58.0	14.3	72.3	13.9	11.9	80.2	7.0
Tasmania	4.8	4.2	9.0	*1.7	*1.8	10.8	2.5	13.4	*26.1	*17.1	81.0	*12.6
Northern Territory	3.6	1.8	5.4	*0.7	*0.9	6.2	2.6	8.8	*16.1	*13.9	70.9	*7.8
Australian Capital Territory	2.3	3.0	5.4	*0.5	*0.7	6.1	*1.3	7.4	*18.6	*12.0	82.5	*7.2
Australia	206.3	180.3	386.6	58.8	74.6	461.2	120.0	581.2	22.2	16.2	79.3	10.1
ATTENDING FULL-TIME EDUCATION												
New South Wales	12.1	89.3	101.4	*2.9	26.0	127.4	160.2	287.6	*19.2	20.4	44.3	*1.0
Victoria	6.2	99.1	105.3	*3.9	25.4	130.7	127.1	257.8	*38.5	19.4	50.7	*1.5
Queensland	8.6	75.0	83.6	*4.1	13.2	96.8	72.8	169.7	*32.4	13.6	57.1	*2.4
South Australia	2.8	22.2	25.0	*2.4	9.6	34.6	30.4	65.0	*46.3	27.8	53.2	*3.7
Western Australia	*3.0	33.1	36.1	*2.4	7.7	43.7	39.5	83.3	*45.1	17.6	52.5	*2.9
Tasmania	*1.0	6.4	7.4	*0.8	2.0	9.4	12.0	21.4	*44.9	21.3	43.9	*3.8
Northern Territory	*0.3	2.6	2.9	*0.1	*0.7	3.5	3.9	7.5	*28.4	*19.1	47.3	*1.6
Australian Capital Territory	*1.2	5.9	7.1	*0.2	*1.2	8.3	7.6	15.9	*14.0	*14.1	52.2	*1.2
Australia	35.2	333.6	368.8	16.9	85.7	454.5	453.6	908.1	32.4	18.9	50.0	1.9
TOTAL												
New South Wales	75.4	144.0	219.4	27.8	57.9	277.4	200.3	477.7	27.0	20.9	58.1	5.8
Victoria	42.0	136.2	178.2	11.4	35.7	213.9	149.7	363.7	21.3	16.7	58.8	3.1
Queensland	61.8	117.4	179.2	19.3	31.0	210.3	100.2	310.5	23.8	14.8	67.7	6.2
South Australia	14.7	39.5	54.2	5.5	13.7	67.8	39.6	107.4	27.4	20.2	63.1	5.1
Western Australia	34.4	52.8	87.2	7.5	14.6	101.8	53.8	155.6	17.9	14.3	65.4	4.8
Tasmania	5.8	10.6	16.4	2.5	3.9	20.3	14.6	34.8	30.2	19.0	58.2	7.1
Northern Territory	3.9	4.3	8.2	*0.8	1.5	9.8	6.5	16.2	*17.2	15.8	60.0	*4.9
Australian Capital Territory	3.6	9.0	12.5	*0.7	*1.9	14.4	8.9	23.3	*17.1	*13.2	61.9	*3.1
Australia	241.5	513.9	755.4	75.6	160.3	915.7	573.6	1 489.3	23.8	17.5	61.5	5.1

* estimate is subject to sampling variability too high for most practical purposes

LABOUR FORCE STATUS IN DECEMBER 2009

<i>Labour force status in November 2009</i>	<i>Employed Full time</i> '000	<i>Employed Part time</i> '000	<i>Employed Total</i> '000	<i>Unemployed</i> '000	<i>Labour Force</i> '000	<i>Not in Labour Force</i> '000	<i>Matched Civilian Population</i> '000
MALES							
Employed Full time	3 753	117	3 870	21	3 891	33	3 924
Employed Part time	132	568	700	16	716	48	764
Employed Total	3 885	685	4 570	37	4 607	81	4 688
Unemployed Total	31	34	65	151	216	45	261
Labour Force	3 916	719	4 635	188	4 823	127	4 949
Not in Labour Force	42	64	106	75	181	1 644	1 825
Matched Civilian Population	3 957	784	4 741	263	5 004	1 771	6 775
FEMALES							
Employed Full time	1 922	176	2 098	11	2 109	27	2 136
Employed Part time	200	1 529	1 730	17	1 746	88	1 835
Employed Total	2 122	1 705	3 827	28	3 855	115	3 971
Unemployed Total	15	33	48	103	151	55	207
Labour Force	2 137	1 738	3 875	131	4 007	171	4 177
Not in Labour Force	26	104	130	78	208	2 533	2 741
Matched Civilian Population	2 163	1 842	4 005	209	4 214	2 704	6 918
PERSONS							
Employed Full time	5 675	292	5 968	32	6 000	60	6 060
Employed Part time	332	2 098	2 430	33	2 462	136	2 598
Employed Total	6 007	2 390	8 397	65	8 462	197	8 659
Unemployed Total	46	67	113	254	367	101	468
Labour Force	6 053	2 457	8 510	319	8 829	298	9 127
Not in Labour Force	67	168	236	153	389	4 177	4 566
Matched Civilian Population	6 120	2 626	8 746	472	9 218	4 475	13 693

(a) Gross flows figures do not match published labour force estimates. Refer to gross flows in Glossary.

AGGREGATE MONTHLY HOURS WORKED

	MALES		FEMALES		PERSONS	
	<i>TREND</i>	<i>SEASONALLY ADJUSTED</i>	<i>TREND</i>	<i>SEASONALLY ADJUSTED</i>	<i>TREND</i>	<i>SEASONALLY ADJUSTED</i>
	<i>Hours worked</i>	<i>Hours worked</i>	<i>Hours worked</i>	<i>Hours worked</i>	<i>Hours worked</i>	<i>Hours worked</i>
	millions	millions	millions	millions	millions	millions
December 2006	916.3	920.2	565.6	572.3	1 481.9	1 492.4
December 2007	943.2	936.7	581.4	579.2	1 524.5	1 515.9
2008						
December	944.0	943.8	589.7	588.3	1 533.6	1 532.1
2009						
January	939.4	941.5	589.8	593.0	1 529.2	1 534.4
February	935.3	932.9	590.1	590.7	1 525.4	1 523.6
March	931.8	930.1	589.9	588.2	1 521.7	1 518.3
April	929.3	931.8	589.3	589.8	1 518.6	1 521.6
May	927.9	925.7	588.3	587.8	1 516.2	1 513.5
June	927.6	931.2	587.4	588.9	1 515.0	1 520.1
July	928.7	925.0	586.9	589.4	1 515.6	1 514.3
August	931.0	929.5	587.0	580.8	1 518.0	1 510.3
September	934.0	936.4	587.7	588.1	1 521.6	1 524.5
October	937.3	934.3	588.6	588.7	1 525.9	1 523.0
November	940.5	943.3	589.7	593.3	1 530.2	1 536.6
December	943.2	945.6	590.6	590.0	1 533.9	1 535.6

	TREND			SEASONALLY ADJUSTED			ORIGINAL		
	Under-employed workers	Under-employment rate	Labour force under-utilisation rate	Under-employed workers	Under-employment rate	Labour force under-utilisation rate	Under-employed workers	Under-employment rate	Labour force under-utilisation rate
	'000	%	%	'000	%	%	'000	%	%
MALES									
November 2005	283.9	4.9	9.8	294.3	5.1	10.0	291.3	5.0	9.6
November 2006	291.5	4.9	9.3	281.4	4.7	9.2	276.7	4.7	8.8
November 2007	276.2	4.6	8.5	275.4	4.5	8.8	269.2	4.4	8.4
2008									
May	258.9	4.2	8.0	263.1	4.3	8.3	263.5	4.3	8.4
August	263.4	4.3	8.2	251.4	4.1	7.9	246.0	4.0	7.6
November	295.2	4.8	9.2	293.7	4.8	9.0	284.7	4.6	8.5
2009									
February	341.9	5.5	10.7	338.1	5.5	10.8	354.6	5.7	11.5
May	375.2	6.0	11.8	399.7	6.4	12.5	401.9	6.5	12.7
August	387.9	6.2	12.2	376.7	6.1	12.0	368.3	6.0	11.6
November	389.0	6.2	12.2	386.4	6.2	11.9	370.5	5.9	11.3
FEMALES									
November 2005	430.5	9.0	14.1	428.8	9.0	14.0	430.4	9.0	13.6
November 2006	412.1	8.4	13.3	402.7	8.2	13.0	403.6	8.3	12.6
November 2007	407.5	8.1	12.8	407.2	8.1	12.9	408.2	8.1	12.5
2008									
May	397.6	7.8	12.3	405.8	8.0	12.6	409.2	8.0	12.6
August	415.3	8.1	12.8	407.0	8.0	12.5	388.9	7.7	11.9
November	444.5	8.6	13.5	433.4	8.5	13.4	434.3	8.5	12.9
2009									
February	474.3	9.2	14.4	502.7	9.7	15.0	519.5	9.9	16.1
May	493.9	9.5	15.0	474.2	9.1	14.6	477.7	9.1	14.5
August	503.5	9.7	15.3	512.5	9.9	15.6	490.8	9.5	14.9
November	508.0	9.8	15.4	508.9	9.7	15.3	512.7	9.8	14.9
PERSONS									
November 2005	714.4	6.7	11.7	723.1	6.8	11.8	721.6	6.8	11.4
November 2006	703.7	6.5	11.1	684.2	6.3	10.9	680.2	6.3	10.5
November 2007	683.6	6.2	10.4	682.6	6.1	10.7	677.4	6.1	10.2
2008									
May	656.5	5.9	10.0	668.9	6.0	10.3	672.7	6.0	10.3
August	678.7	6.0	10.3	658.4	5.9	10.0	634.9	5.7	9.6
November	739.7	6.5	11.2	727.2	6.4	11.0	719.0	6.4	10.5
2009									
February	816.2	7.2	12.4	840.9	7.4	12.7	874.1	7.6	13.6
May	869.0	7.6	13.3	873.9	7.6	13.5	879.6	7.7	13.5
August	891.5	7.8	13.6	889.3	7.8	13.6	859.1	7.6	13.1
November	897.0	7.8	13.6	895.3	7.8	13.5	883.2	7.7	12.9

(a) Seasonally adjusted and trend data are compiled using estimates only from the quarter months (i.e. February, May, August and November), and therefore may differ from the official monthly estimates produced in *Labour Force, Australia* (cat. no. 6202.0).

—November 2009

	TREND			SEASONALLY ADJUSTED			ORIGINAL		
	<i>Under-employed workers</i>	<i>Under-employment rate</i>	<i>Labour force under-utilisation rate</i>	<i>Under-employed workers</i>	<i>Under-employment rate</i>	<i>Labour force under-utilisation rate</i>	<i>Under-employed workers</i>	<i>Under-employment rate</i>	<i>Labour force under-utilisation rate</i>
	'000	%	%	'000	%	%	'000	%	%
MALES									
New South Wales	116.5	5.9	12.4	116.0	5.9	12.4	116.0	5.9	12.0
Victoria	98.3	6.3	12.3	92.5	5.9	11.5	93.2	6.0	10.9
Queensland	87.2	6.8	12.8	92.3	7.2	13.2	86.4	6.8	12.4
South Australia	28.6	6.4	12.4	28.9	6.4	12.2	28.9	6.4	11.8
Western Australia	37.9	5.5	10.5	34.7	5.0	9.8	33.5	4.9	9.1
Tasmania	7.4	5.7	11.4	6.9	5.3	10.9	6.6	5.1	10.8
Northern Territory	2.3	3.3	7.2	1.9	2.8	6.2	1.7	2.4	5.8
Australian Capital Territory	4.0	3.8	7.9	4.4	4.1	8.0	4.3	4.1	7.6
Australia	389.0	6.2	12.2	386.4	6.2	11.9	370.5	5.9	11.3
FEMALES									
New South Wales	156.5	9.5	15.5	155.3	9.5	15.2	157.3	9.6	14.9
Victoria	134.1	10.3	15.6	134.6	10.3	15.4	136.4	10.4	15.0
Queensland	111.0	10.3	16.3	114.5	10.6	16.7	111.7	10.4	15.7
South Australia	39.4	10.2	15.3	39.4	10.2	15.4	39.8	10.3	15.1
Western Australia	50.3	9.4	15.3	50.1	9.3	15.2	49.2	9.3	14.4
Tasmania	9.6	8.5	13.7	9.2	8.1	13.2	9.5	8.3	13.5
Northern Territory	2.8	5.0	7.8	3.2	5.6	8.2	2.8	4.8	7.3
Australian Capital Territory	5.7	5.9	9.1	5.7	5.9	9.2	6.0	6.2	9.3
Australia	508.0	9.8	15.4	508.9	9.7	15.3	512.7	9.8	14.9
PERSONS									
New South Wales	273.0	7.5	13.8	271.3	7.5	13.7	273.3	7.6	13.3
Victoria	232.4	8.1	13.8	227.1	7.9	13.3	229.6	8.0	12.8
Queensland	198.2	8.4	14.5	206.8	8.8	14.8	198.1	8.4	13.9
South Australia	68.1	8.1	13.7	68.3	8.1	13.6	68.7	8.2	13.4
Western Australia	88.2	7.2	12.6	84.8	6.9	12.2	82.7	6.8	11.4
Tasmania	17.0	7.0	12.5	16.1	6.6	12.0	16.0	6.6	12.1
Northern Territory	5.1	4.1	7.5	5.1	4.1	7.1	4.5	3.5	6.4
Australian Capital Territory	9.7	4.8	8.5	10.1	5.0	8.6	10.3	5.1	8.4
Australia	897.0	7.8	13.6	895.3	7.8	13.5	883.2	7.7	12.9

(a) Seasonally adjusted and trend data are compiled using estimates only from the quarter months (i.e. February, May, August and November), and therefore may differ from the official monthly estimates produced in *Labour Force, Australia* (cat. no. 6202.0).

WHAT IF...? REVISIONS TO TREND ESTIMATES

EFFECT OF NEW SEASONALLY ADJUSTED ESTIMATES ON TREND ESTIMATES

TREND REVISIONS

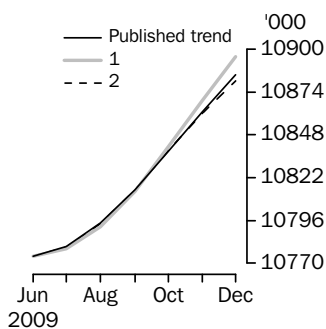
Each time new seasonally adjusted estimates become available, trend estimates are revised. This revision is a combined result of the concurrent seasonal adjustment process and the application of surrogates of the Henderson average to the seasonally adjusted series (see paragraphs 27 to 35 of the Explanatory Notes).

The examples in the tables below show two illustrative scenarios and the consequent revisions to previous trend estimates of employment and the unemployment rate. The revisions in the scenarios are due to the use of surrogates of the Henderson average, as the impact of revision of seasonally adjusted estimates can not be estimated in advance.

- (1) The January seasonally adjusted estimate is *higher* than the December estimate by:
 - 0.24% for employment
 - 2.10% for the unemployment rate
- (2) The January seasonally adjusted estimate is *lower* than the December estimate by:
 - 0.24% for employment
 - 2.10% for the unemployment rate

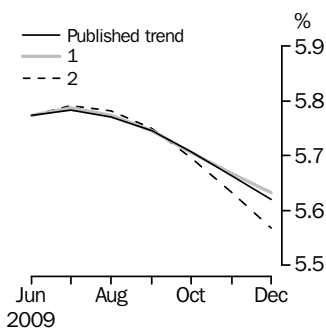
The percentage changes of 0.24% and 2.10% represent the average absolute monthly percentage changes in employment and the unemployment rate respectively. Estimates in the graphs have been calculated using unrounded estimates, and may be different from, but more accurate than, rounded estimates depicted in its corresponding table.

EMPLOYMENT



	Trend as published	WHAT IF NEXT MONTH'S SEASONALLY ADJUSTED ESTIMATE IS:	
		(1) 10 917.5 i.e. rises by 0.24%	(2) 10 895.4 i.e. falls by 0.24%
2009			
September	10 814.8	10 813.8	10 814.7
October	10 838.3	10 840.7	10 838.3
November	10 862.0	10 868.8	10 861.1
December	10 884.3	10 895.5	10 880.8

UNEMPLOYMENT RATE



	Trend as published	WHAT IF NEXT MONTH'S SEASONALLY ADJUSTED ESTIMATE IS:	
		(1) 5.6 i.e. rises by 2.10%	(2) 5.5 i.e. falls by 2.10%
2009			
September	5.7	5.7	5.7
October	5.7	5.7	5.7
November	5.7	5.7	5.6
December	5.6	5.6	5.6

EXPLANATORY NOTES

INTRODUCTION

1 This publication contains estimates of the civilian labour force derived from the Labour Force Survey component of the Monthly Population Survey. The full time series for estimates from this publication are also available electronically. More detailed estimates are released one week after this publication in various electronic formats – see *Labour Force, Australia, Detailed – Electronic Delivery* (cat. no. 6291.0.55.001) and *Labour Force, Australia, Detailed, Quarterly* (cat. no. 6291.0.55.003).

CONCEPTS, SOURCES AND METHODS

2 The conceptual framework used in Australia's Labour Force Survey aligns closely with the standards and guidelines set out in Resolutions of International Conferences of Labour Statisticians. Descriptions of the underlying concepts and structure of Australia's labour force statistics, and the sources and methods used in compiling the estimates, are presented in *Labour Statistics: Concepts, Sources and Methods* (cat. no. 6102.0.55.001) which is available on the ABS website <<http://www.abs.gov.au>>.

LABOUR FORCE SURVEY

3 The Labour Force Survey is based on a multi-stage area sample of private dwellings (currently approximately 29,000 houses, flats, etc.) and a list sample of non-private dwellings (hotels, motels, etc.), and covers approximately 0.33% of the civilian population of Australia aged 15 years and over.

4 Information is obtained from the occupants of selected dwellings by specially trained interviewers using computer-assisted interviewing (CAI).

5 Households selected for the Labour Force Survey are interviewed each month for eight months, with one-eighth of the sample being replaced each month. The first interview is conducted face-to-face. Subsequent interviews are conducted by telephone (if acceptable to the respondent).

6 The interviews are generally conducted during the two weeks beginning on the Sunday between the 5th and 11th of each month. The information obtained relates to the week before the interview (i.e. the reference week). Each year, to deal with operational difficulties involved with collecting and processing the Labour Force Survey around the Christmas and New Year holiday period, interviews for December start four weeks after November interviews start, and January interviews start five weeks after December interviews start. As a result, January interviewing may commence as early as the 7th or as late as the 13th, depending on the year. Occasionally, circumstances that present significant operational difficulties for survey collection can result in a change to the normal pattern for the start of interviewing.

7 Estimates from the Labour Force Survey are published first in this publication 32 days after the commencement of interviews for that month, with the exception of estimates for each December which are published 39 days after the commencement of interviews.

SCOPE OF SURVEY

8 The Labour Force Survey includes all persons aged 15 years and over except members of the permanent defence forces, certain diplomatic personnel of overseas governments customarily excluded from census and estimated population counts, overseas residents in Australia, and members of non-Australian defence forces (and their dependants) stationed in Australia.

COVERAGE

9 In the Labour Force Survey, coverage rules are applied which aim to ensure that each person is associated with only one dwelling, and hence has only one chance of selection. The coverage rules are necessarily a balance between theoretical and operational considerations. Nevertheless, the chance of a person being enumerated at two separate dwellings in the survey is considered to be negligible.

POPULATION BENCHMARKS

10 Labour Force Survey estimates are calculated in such a way as to add up to independent estimates of the civilian population aged 15 years and over (population benchmarks). These population benchmarks are projections of the most recently released quarterly Estimated Resident Population (ERP) data. For information on the

EXPLANATORY NOTES *continued*

POPULATION BENCHMARKS

continued

methodology used to produce the ERP see *Australian Demographic Statistics* (cat. no. 3101.0). To create the population benchmarks for the Labour Force Survey, the most recently released quarterly ERP estimates are projected forward one quarter past the period for which they are required. The projection is based on the historical pattern of each population component - births, deaths, interstate migration and net overseas migration (NOM). By projecting one quarter past that needed for the current population benchmarks, demographic changes are smoothed in, thereby making them less noticeable in the population benchmarks.

11 The ERP series are revised annually in the September quarter issue of *Australian Demographic Statistics* (cat. no. 3101.0), released in March each year, to incorporate more up to date information available for the population components. The revised ERP estimates are used to update the quarterly population projections used in creating the Labour Force Survey population benchmarks. Benchmarks already used in producing Labour Force Survey estimates are not revised. A process of smoothing is used in the creation of subsequent population benchmarks to reduce the effect of these annual revisions to ERP estimates on the Labour Force Survey population benchmarks.

12 In the 2009 ERP revision cycle final NOM data for the 2006–07 reference year was incorporated, detailing a large revision to ERP. To prevent the ERP revision causing an unduly large month to month movement in the labour force benchmark population, a smoothing factor is applied to gradually incorporate the revised estimates. A result of this smoothing method is that the Labour Force civilian population benchmark will not be comparable to the ERP published in *Australian Demographic Statistics* (cat. no. 3101.0), pending the next labour force revision cycle.

13 Every five years the ERP series are revised to incorporate additional information available from the latest Census of Population and Housing. Following the incorporation of Census information, the ERP series prior to the latest Census are final and subject to no further revision. Labour Force Survey population benchmarks, and the estimates, are revised following this 5-yearly revision in the ERP. From the February 2009 issue of this publication, labour force estimates have been compiled using population benchmarks based on the results of the 2006 Census of Population and Housing. Revisions were made in the February 2009 issue to historical labour force estimates from June 2001 to January 2009.

ESTIMATION METHOD

14 The estimation method used in the Labour Force Survey is Composite Estimation, which was introduced in May 2007. Composite Estimation combines data collected in the previous six months with current month's data to produce the current month's estimates, thereby exploiting the high correlation between overlapping samples across months in the Labour Force Survey. The Composite Estimator combines the previous and current months' data by applying different factors according to length of time in the survey. After these factors are applied, the seven months of data are weighted to align with current month population benchmarks. For details see *Information Paper: Forthcoming Changes to Labour Force Statistics, 2007* (cat. no. 6292.0).

COMPARABILITY OF SERIES

15 From April 1986, the definition of employed persons was changed to include persons who worked without pay between 1 and 14 hours per week in a family business or on a farm (i.e. contributing family workers). For further information, see paragraphs 22 and 23 of the Explanatory Notes in the February 2003 issue of *Labour Force, Australia* (cat. no. 6203.0).

16 The ABS introduced telephone interviewing into the Labour Force Survey in August 1996. Implementation was phased in for each new sample group from August 1996 to February 1997. During the period of implementation, the new method produced different estimates than would have been obtained under the old methodology. The effect dissipated over the final months of implementation and was no

EXPLANATORY NOTES *continued*

COMPARABILITY OF SERIES

continued

longer discernible from February 1997. The estimates for February 1997 and onwards are directly comparable to estimates for periods prior to August 1996. For further details, see the feature article in the June 1997 issue of *Labour Force, Australia* (cat. no. 6203.0).

17 From April 2001 the Labour Force Survey has been conducted using a redesigned questionnaire containing additional data items and some minor definitional changes. The definition of unemployed persons was changed to include all persons who were waiting to start work and were available to start in the reference week. This change was introduced in February 2004, when historical unit record data were revised from April 2001 to January 2004. This revision created a small trend break at April 2001 in unemployed persons and unemployment rate series. For further details, see *Information Paper: Forthcoming Changes to Labour Force Statistics* (cat. no. 6292.0), released in December 2003.

18 Core labour force series were revised in April 2001 for the period April 1986 to March 2001 for the remaining definitional changes introduced with the redesigned questionnaire, to reduce the impact of the changes on labour force series. For further details, see *Information Paper: Implementing the Redesigned Labour Force Survey Questionnaire* (cat. no. 6295.0) and *Information Paper: Questionnaires Used in the Labour Force Survey* (cat. no. 6232.0).

19 In May 2007, an improved method of estimation, known as composite estimation, was introduced into the Labour Force Survey. In introducing this change the ABS revised unit record data from April 2001 to April 2007 based on the new estimation method. While estimates for periods prior to April 2001 are unrevised and were compiled using a different estimation method, no trend break was identified in the employed persons series. Also, no change was identified in the trend breaks in the unemployed persons and unemployment rate series which arose with the introduction of a redesigned survey form in April 2001 (as noted above in paragraph 16). For further details, see *Information Paper: Forthcoming Changes to Labour Force Statistics, 2007* (cat. no. 6292.0).

LABOUR FORCE SURVEY SAMPLE

20 The current Labour Force Survey sample has been selected using information collected in the 2006 Census of Population and Housing.

21 The majority of this sample was phased in over the period November 2007 to June 2008, with one-eighth of this portion of the sample being introduced every month. The remainder of the sample (about 20% of the total), which covers less settled areas of Australia and non-private dwellings was rotated in full for New South Wales, Western Australia, Northern Territory and Australian Capital Territory in March 2008, and for Victoria, Queensland, South Australia and Tasmania in April 2008. Such a pattern of implementation means that any changes to labour force estimates due to differences between the two samples, or any other influences, were spread over the eight months.

22 As one of a range of ABS savings initiatives for the 2008–09 financial year, there was a 24% reduction in the LFS sample size for the period July 2008 to August 2009, relative to the June 2008 sample size. The sample reduction was reinstated from September 2009 to December 2009, with December 2009 estimates being the first produced under the fully reinstated sample.

23 For further details, see *Information Paper: Labour Force Survey Sample Design* (cat. no. 6269.0).

RELIABILITY OF ESTIMATES

24 Two types of error are possible in an estimate based on a sample survey: sampling error and non-sampling error.

25 Sampling error occurs because a sample, rather than the entire population, is surveyed. One measure of the likely difference resulting from not including all dwellings in the survey is given by the standard error. There are about two chances in three that a sample estimate will differ by less than one standard error from the figure that would

EXPLANATORY NOTES *continued*

RELIABILITY OF ESTIMATES

continued

have been obtained if all dwellings had been included in the survey, and about nineteen chances in twenty that the difference will be less than two standard errors. Standard errors of key estimates for the latest month and of movements since the previous month of these estimates are shown in the standard errors section of this publication. Standard errors for other estimates and other movements may be calculated by using the spreadsheet contained in *Labour Force Survey Standard Errors, Data Cube* (cat. no. 6298.0.55.001) which is available free of charge on the ABS website <<http://www.abs.gov.au>>.

26 Non-sampling error arises from inaccuracies in collecting, recording and processing the data. Every effort is made to minimise reporting error by the careful design of questionnaires, intensive training and supervision of interviewers, and efficient data processing procedures. Non-sampling error also arises because information cannot be obtained from all persons selected in the survey. The Labour Force Survey receives a high level of co-operation from individuals in selected dwellings, with the average response rate over the last year being 97%. See Glossary for definition of response rate.

SEASONAL ADJUSTMENT AND TREND ESTIMATION

27 Seasonal adjustment is a means of removing the estimated effects of normal seasonal variation from the series so that the effects of other influences on the series can be more clearly recognised. Seasonal adjustment does not aim to remove the irregular or non-seasonal influences which may be present in any particular month. This means that month-to-month movements of the seasonally adjusted estimates may not be reliable indicators of trend behaviour.

28 The Labour Force Survey uses the concurrent seasonal adjustment method to derive seasonal factors. Concurrent seasonal adjustment uses data up to the current month to estimate seasonal factors for the current and all previous months. This process can result in revisions each month to estimates for earlier periods. However, in most instances, the only noticeable revisions will be to the seasonally adjusted estimates for the previous month and one year prior to the current month.

29 The revision properties of the seasonally adjusted and trend estimates can be improved by the use of Autoregressive Integrated Moving Average (ARIMA) modelling. ARIMA modelling relies on the characteristics of the series being analysed to project future period data. The projected values are temporary, intermediate values, that are only used internally to improve the estimation of the seasonal factors. The projected data do not affect the original estimates and are discarded at the end of the seasonal adjustment process. The Labour Force Survey uses an ARIMA model for 95% of the individual time series. The ARIMA model is assessed as part of the annual reanalysis. For further details, see the feature article in *Australian Economic Indicators, Oct 2004* (cat. no. 1350.0).

30 Seasonal adjustment is able to remove the effect of events which occur at the same time in the survey every year. However, there are some events, like holidays, which are not always at the same time in the survey cycle or which are not at the same time across Australia. The effects of these types of events on Labour Force Survey estimates cannot in all cases be removed, because the pattern of their effects cannot be determined. However, two events which are adjusted for in the seasonally adjusted series are the January interview start date and the timing of Easter. For further details, see *Information Paper: Forthcoming Changes to Labour Force Statistics* (cat. no. 6292.0) released in December 2003.

31 While seasonal factors for the complete time series are estimated each month, they will continue to be reviewed annually at a more detailed level to take into account each additional year's original data. This annual review will not normally result in significant changes to published estimates. The review is usually conducted in February each year with the results released in the February issue of this publication.

EXPLANATORY NOTES *continued*

SEASONAL ADJUSTMENT AND TREND ESTIMATION *continued*

32 The smoothing of seasonally adjusted series to produce 'trend' series reduces the impact of the irregular component of the seasonally adjusted series. These trend estimates are derived by applying a 13-term Henderson-weighted moving average to all months except the last six. The last six monthly trend estimates are obtained by applying surrogates of the Henderson average to the seasonally adjusted series. Trend estimates are used to analyse the underlying behaviour of a series over time.

33 While this smoothing technique enables estimates to be produced for the latest month, it does result in revisions in addition to those caused by the revision of seasonally adjusted estimates. Generally, revisions due to the use of surrogates of the Henderson average become smaller, and after three months have a negligible impact on the series.

34 Trend estimates are published for the Northern Territory in table 10 and for the Australian Capital Territory in table 11. Unadjusted series for the two territories have shown, historically, a high degree of variability, which can lead to considerable revisions to the seasonally adjusted estimates each month when seasonal factors are estimated. For this reason, seasonally adjusted estimates are not currently published for the two Territories. In addition, caution should be exercised in the interpretation of trend estimates for the two territories, particularly for the three most recent months, where revisions may be relatively large.

35 For further information, see *A Guide to Interpreting Time Series – Monitoring Trends* (cat. no. 1349.0) or contact the Assistant Director, Time Series Analysis on (02) 6252 6345 or email time.series.analysis@abs.gov.au.

RELATED PUBLICATIONS

36 Users may also wish to refer to *Australian Labour Market Statistics* (cat. no. 6105.0). This publication contains additional tables and a detailed list of related publications. For further information about this publication, please contact the Assistant Director, Labour Market Statistics on (02) 6252 7636.

37 ABS Information about the labour market can be found on the Labour theme page on the ABS website <<http://www.abs.gov.au>>(Themes).

38 Information about current publications and other products released by the ABS is available from the statistics page on the ABS website. The ABS also issues a daily release advice on the website, Upcoming Product Releases which details products to be released in the week ahead.

DATA AVAILABLE ON REQUEST

39 As well as the statistics included in this and related publications, the ABS may have other relevant data available. Inquiries should be made to the Labour Force contact officer on (02) 6252 6525, email labourforce@abs.gov.au or to any ABS office.

EFFECTS OF ROUNDING

40 Estimates have been rounded and discrepancies may occur between sums of the component items and totals. Estimates of movement shown in this publication are obtained by taking the difference of unrounded estimates. The movement estimate is then rounded to one decimal place. Where a discrepancy occurs between the reported movement and the difference of the rounded estimates, the reported movement will be more accurate.

EXPLANATORY NOTES *continued*

SYMBOLS AND ABBREVIATIONS

41 SYMBOLS AND ABBREVIATIONS

<i>Symbol</i>	<i>Definition</i>
'000	thousands
%	percentage
ABS	Australian Bureau of Statistics
CAI	computer assisted interviewing
cat. no.	catalogue number
ERP	estimated resident population
f/t	full time
LFS	Labour Force Survey
p/t	part time
pts	percentage points
Seas adj.	seasonally adjusted
TAFE	Technical and Further Education

STANDARD ERRORS

STANDARD ERRORS

The estimates in this publication are based on information gained from the occupants of a sample survey of dwellings. Because the entire population is not surveyed, the published estimates are subject to sampling error. The most common way of quantifying such sampling error is to calculate the standard error for the published estimate or statistic. For more information, see paragraphs 24 to 26 of the Explanatory Notes.

LEVEL ESTIMATES

To illustrate, let us say the published level estimate for employed persons aged 15–19 years is 700,000 and the associated standard error is 8,300. The standard error is then used to interpret the level estimate of 700,000. For instance, the standard error of 8,300 indicates that:

- There are approximately two chances in three that the real value falls within the range 691,700 to 708,300 (700,000 + or – 8,300)
- There are approximately nineteen chances in twenty that the real value falls within the range 683,400 to 716,600 (700,000 + or – 16,600).

The real value in this case is the result we would obtain if we could enumerate the total population.

The following table shows the standard errors for this month's level estimates.

											AUSTRALIA										
											Males	Females	Persons								
											NSW	Vic.	Qld	SA	WA	Tas.	NT	ACT			
Aged 15 years and over																					
Employed																					
Full time	'000	20.4	20.6	15.2	6.7	9.7	2.7	4.0	2.4	26.7	19.1	32.3									
Part time	'000	14.2	13.0	10.0	4.9	6.9	2.0	1.3	1.5	11.0	17.2	21.2									
Total	'000	22.4	25.1	17.4	7.8	10.7	3.2	4.7	2.5	29.0	26.7	36.7									
Unemployed																					
Looking for f/t work	'000	8.8	6.6	6.3	2.7	3.4	1.1	0.5	0.9	10.0	8.0	12.9									
Looking for p/t work	'000	5.2	4.6	3.3	1.7	2.2	0.6	0.3	0.5	4.9	6.2	7.9									
Total	'000	10.3	8.2	7.0	3.1	4.1	1.3	0.7	1.0	11.2	10.1	15.3									
Labour force	'000	22.8	25.8	17.7	7.9	10.9	3.2	4.8	2.5	29.8	27.4	37.3									
Not in labour force	'000	21.0	22.9	15.1	7.0	10.3	3.1	3.3	2.2	24.0	28.7	33.9									
Unemployment rate																					
Looking for f/t work	pts	0.3	0.3	0.4	0.5	0.4	0.7	0.5	0.5	0.2	0.3	0.2									
Looking for p/t work	pts	0.5	0.5	0.5	0.6	0.6	0.8	1.2	1.0	0.5	0.3	0.2									
Total	pts	0.3	0.3	0.3	0.4	0.3	0.5	0.5	0.5	0.2	0.2	0.1									
Participation rate	pts	0.4	0.6	0.5	0.6	0.6	0.8	2.9	0.9	0.3	0.3	0.2									
Aged 15–19 years																					
Employed																					
Full time	'000	3.6	2.7	2.8	1.1	1.9	0.5	0.4	0.4	4.7	3.9	5.7									
Part time	'000	4.6	4.3	3.8	1.7	2.2	0.7	0.4	0.6	5.4	6.2	7.9									
Total	'000	5.7	5.0	4.7	2.0	2.9	0.8	0.5	0.7	6.8	7.0	9.5									
Unemployed																					
Looking for f/t work	'000	3.5	2.1	2.7	1.1	1.5	0.5	0.3	0.3	4.1	3.2	5.2									
Looking for p/t work	'000	3.7	3.1	2.0	1.3	1.4	0.4	0.2	0.4	3.9	3.9	5.5									
Total	'000	5.2	3.8	3.5	1.8	2.0	0.7	0.3	0.5	5.6	5.0	7.6									
Labour force	'000	6.5	5.5	5.2	2.2	3.2	0.9	0.6	0.8	7.5	7.5	10.5									
Not in labour force	'000	7.7	6.1	4.8	2.3	3.3	1.0	0.7	0.8	8.0	7.5	11.1									
Unemployment rate																					
Looking for f/t work	pts	3.3	3.7	3.1	5.1	3.4	6.2	5.2	7.1	2.0	2.5	1.6									
Looking for p/t work	pts	2.1	1.9	1.5	2.7	2.3	3.3	4.6	3.8	1.4	1.1	0.9									
Total	pts	1.8	1.7	1.6	2.5	1.9	3.2	3.4	3.4	1.2	1.1	0.8									
Participation rate	pts	1.4	1.5	1.7	2.1	2.1	2.7	3.8	3.3	1.0	1.0	0.7									
Unemployment to population ratio – looking for f/t work																					
	pts	0.7	0.6	0.9	1.0	0.9	1.6	1.6	1.3	0.5	0.4	0.3									

STANDARD ERRORS *continued*

MOVEMENT ESTIMATES

The following example illustrates how to use the standard error to interpret a movement estimate. Let us say that one month the published level estimate for females employed part-time in Australia is 1,890,000; the next month the published level estimate is 1,900,000 and the associated standard error for the movement estimate is 9,500. The standard error is then used to interpret the published movement estimate of 10,000. For instance, the standard error of 9,500 indicates that:

- There are approximately two chances in three that the real movement between the two months falls within the range 500 to 19,500 (10,000 + or – 9,500)
- There are approximately nineteen chances in twenty that the real movement falls within the range –9,000 to 29,000 (10,000 + or – 19,000).

The following table shows the standard errors for this month's movement estimates.

		AUSTRALIA										
		NSW	Vic.	Qld	SA	WA	Tas.	NT	ACT	Males	Females	Persons
Aged 15 years and over												
Employed												
Full time	'000	13.5	10.9	9.7	3.8	6.1	1.7	1.3	1.6	17.1	12.5	21.7
Part time	'000	8.7	7.3	6.0	2.7	4.0	1.2	0.6	1.0	7.8	11.5	13.8
Total	'000	16.2	13.3	13.0	5.3	7.7	2.1	1.4	1.9	18.9	17.2	26.5
Unemployed												
Looking for f/t work	'000	8.7	6.4	6.8	2.6	3.6	1.1	0.5	0.9	10.1	8.0	13.1
Looking for p/t work	'000	5.1	4.5	3.4	1.6	2.3	0.7	0.3	0.6	5.0	6.2	8.0
Total	'000	10.2	7.9	7.8	3.0	4.1	1.3	0.5	1.1	11.3	10.2	15.5
Labour force	'000	16.7	13.6	13.7	5.6	8.0	2.2	1.4	1.9	19.5	17.7	27.4
Not in labour force	'000	15.4	12.5	11.7	5.0	7.0	2.1	1.1	1.8	15.0	18.6	24.7
Unemployment rate												
Looking for f/t work	pts	0.4	0.3	0.4	0.5	0.4	0.7	0.5	0.6	0.2	0.3	0.2
Looking for p/t work	pts	0.5	0.5	0.5	0.6	0.6	0.9	1.2	1.1	0.5	0.3	0.2
Total	pts	0.3	0.3	0.3	0.4	0.3	0.6	0.5	0.5	0.2	0.2	0.1
Participation rate	pts	0.3	0.3	0.4	0.4	0.4	0.5	0.9	0.7	0.2	0.2	0.2
Aged 15–19 years												
Employed												
Full time	'000	2.8	2.0	2.2	0.8	1.5	0.4	0.3	0.3	3.6	3.0	4.3
Part time	'000	3.6	3.2	2.9	1.3	1.8	0.5	0.3	0.5	4.1	4.7	5.8
Total	'000	4.3	3.5	3.4	1.4	2.2	0.6	0.4	0.6	5.1	5.2	6.8
Unemployed												
Looking for f/t work	'000	3.5	2.1	2.8	1.0	1.5	0.5	0.2	0.3	4.2	3.3	5.3
Looking for p/t work	'000	3.7	3.1	2.1	1.3	1.5	0.4	0.2	0.4	3.9	4.0	5.6
Total	'000	5.2	3.8	3.6	1.7	2.1	0.7	0.3	0.5	5.7	5.1	7.7
Labour force	'000	4.7	3.8	3.7	1.6	2.3	0.7	0.4	0.6	5.5	5.5	7.5
Not in labour force	'000	5.1	4.2	3.6	1.6	2.3	0.7	0.5	0.6	6.0	5.7	7.9
Unemployment rate												
Looking for f/t work	pts	3.7	4.4	3.6	6.0	3.6	6.5	6.4	8.2	2.3	2.8	1.8
Looking for p/t work	pts	2.1	1.9	1.7	2.7	2.3	4.0	4.3	4.0	1.5	1.2	0.9
Total	pts	1.9	1.8	1.8	2.6	2.0	3.5	3.7	3.6	1.3	1.1	0.9
Participation rate	pts	1.0	1.1	1.2	1.4	1.5	1.9	2.5	2.5	0.7	0.8	0.5
Unemployment to population ratio – looking for f/t work												
	pts	0.7	0.6	0.9	1.0	1.0	1.5	1.2	1.3	0.5	0.4	0.4

GLOSSARY

Actively looking for work	Includes writing, telephoning or applying in person to an employer for work; answering an advertisement for a job; checking factory noticeboards or the touchscreens at the Centrelink offices; being registered with Centrelink as a jobseeker; checking or registering with any other employment agency; advertising or tendering for work; and contacting friends or relatives.
Aggregate monthly hours worked	<p>Aggregate monthly hours worked measures the total number of actual hours worked by employed persons in a calendar month. It differs from the actual hours worked estimates (and the usual hours worked estimates) since these refer only to the hours worked in the reference week.</p> <p>Actual and usual hours worked cannot be aggregated across time to produce either quarterly or annual estimates as they relate to only a single week in the month. In contrast, aggregate monthly hours worked estimates are a true monthly measure, and may be aggregated across time to produce both quarterly and annual estimates.</p>
Attending full time education	Persons aged 15–24 years enrolled at secondary or high school or enrolled as a full time student at a Technical and Further Education (TAFE) college, university, or other educational institution in the reference week.
Attending school	Persons aged 15–19 years enrolled at secondary or high school in the reference week.
Attending tertiary educational institution full time	Persons aged 15–24 years enrolled full time at a TAFE college, university, or other educational institution in the reference week, except those persons aged 15–19 years who were still attending school.
Civilian population aged 15 years and over	All usual residents of Australia aged 15 years and over except members of the permanent defence forces, certain diplomatic personnel of overseas governments customarily excluded from census and estimated population counts, overseas residents in Australia, and members of non-Australian defence forces (and their dependants) stationed in Australia.
Composite Estimation	The estimation methodology used in the Labour Force Survey. Composite Estimation uses sample responses from nearby months as well as from the reference month to derive estimates for the reference month. This approach achieves gains in efficiency by exploiting the high similarity between the responses provided by the same respondent in previous months. For details see <i>Information Paper: Forthcoming Changes to Labour Force Statistics, 2007</i> (cat. no. 6292.0).
Employed	<p>All persons aged 15 years and over who, during the reference week:</p> <ul style="list-style-type: none">■ worked for one hour or more for pay, profit, commission or payment in kind in a job or business, or on a farm (comprising employees, employers and own account workers); or■ worked for one hour or more without pay in a family business or on a farm (i.e. contributing family workers); or■ were employees who had a job but were not at work and were:<ul style="list-style-type: none">■ away from work for less than four weeks up to the end of the reference week; or■ away from work for more than four weeks up to the end of the reference week and received pay for some or all of the four week period to the end of the reference week; or■ away from work as a standard work or shift arrangement; or■ on strike or locked out; or■ on workers' compensation and expected to return to their job; or■ were employers or own account workers, who had a job, business or farm, but were not at work.
Employment to population ratio	For any group, the number of employed persons expressed as a percentage of the civilian population in the same group.

GLOSSARY *continued*

Full time workers	Employed persons who usually worked 35 hours or more a week (in all jobs) and those who, although usually working less than 35 hours a week, worked 35 hours or more during the reference week.
Gross flows	<p>The matching of respondents who report in consecutive months enables analysis of the transition of individuals between the different labour force status classifications, referred to as the <i>matched sample</i>. The transition counts between the different labour force status classifications from one point in time to the next are commonly referred to as <i>gross flows</i>.</p> <p>The figures presented in gross flows are presented in original terms only and do not align with published labour force estimates. The gross flows figures are derived from the matched sample between consecutive months, which after taking account of the sample rotation and varying non-response in each month is approximately 80 percent of the sample.</p> <p>Caution should be exercised when analysing these gross flows data due to:</p> <ul style="list-style-type: none">■ the figures presented sum to approximately 80 percent of the population values as the gross flows data are based on the matched sample only;■ there is no adjustment applied to account for changes due to seasonal patterns (referred to commonly as seasonal adjustment); and■ the relative sizes of each transition class are subject to bias due to the matched sample being a non-representative sample.
Labour force	For any group, persons who were employed or unemployed, as defined.
Labour force status	A classification of the civilian population aged 15 years and over into employed, unemployed or not in the labour force, as defined. The definitions conform closely to the international standard definitions adopted by the International Conferences of Labour Statisticians.
Labour force underutilisation rate	The sum of the number of persons unemployed and the number of persons in underemployment, expressed as a proportion of the labour force.
Not in labour force	Persons who were not in the categories employed or unemployed as defined.
Participation rate	For any group, the labour force expressed as a percentage of the civilian population aged 15 years and over in the same group.
Part time workers	Employed persons who usually worked less than 35 hours a week (in all jobs) and either did so during the reference week, or were not at work in the reference week.
Response rate	The number of fully responding dwellings expressed as a percentage of the total number of dwellings excluding sample loss. Examples of sample loss include: dwellings where all persons are out of scope and/or coverage; vacant dwellings; dwellings under construction; dwellings converted to non-dwellings; derelict dwellings; and demolished dwellings.
Seasonally adjusted series	A time series of estimates with the estimated effects of normal seasonal variation removed. See Explanatory Notes 27 to 31 for more detail.
Trend series	A smoothed seasonally adjusted series of estimates. See Explanatory Notes 32 to 35 for more detail.
Underemployment rate	The number of underemployed workers expressed as a percentage of the labour force.
Underemployed workers	Employed persons aged 15 years and over who want, and are available for, more hours of work than they currently have. They comprise: <ul style="list-style-type: none">■ persons employed part time who want to work more hours and are available to start work with more hours, either in the reference week or in the four weeks subsequent to the survey; or

GLOSSARY *continued*

Underemployed workers <i>continued</i>	<ul style="list-style-type: none">■ persons employed full time who worked part time hours in the reference week for economic reasons (such as being stood down or insufficient work being available). It is assumed that these people wanted to work full time in the reference week and would have been available to do so.
Unemployed	Persons aged 15 years and over who were not employed during the reference week, and: <ul style="list-style-type: none">■ had actively looked for full time or part time work at any time in the four weeks up to the end of the reference week and were available for work in the reference week; or■ were waiting to start a new job within four weeks from the end of the reference week and could have started in the reference week if the job had been available then.
Unemployed looking for full time work	Unemployed persons who: <ul style="list-style-type: none">■ actively looked for full time work; or■ were waiting to start a new full time job.
Unemployed looking for part time work	Unemployed persons who: <ul style="list-style-type: none">■ actively looked for part time work only; or■ were waiting to start a new part time job.
Unemployment rate	For any group, the number of unemployed persons expressed as a percentage of the labour force in the same group.
Unemployment to population ratio	For any group, the number of unemployed persons expressed as a percentage of the civilian population in the same group.

FOR MORE INFORMATION . . .

INTERNET **www.abs.gov.au** the ABS website is the best place for data from our publications and information about the ABS.

INFORMATION AND REFERRAL SERVICE

Our consultants can help you access the full range of information published by the ABS that is available free of charge from our website. Information tailored to your needs can also be requested as a 'user pays' service. Specialists are on hand to help you with analytical or methodological advice.

PHONE 1300 135 070

EMAIL client.services@abs.gov.au

FAX 1300 135 211

POST Client Services, ABS, GPO Box 796, Sydney NSW 2001

FREE ACCESS TO STATISTICS

All statistics on the ABS website can be downloaded free of charge.

WEB ADDRESS www.abs.gov.au